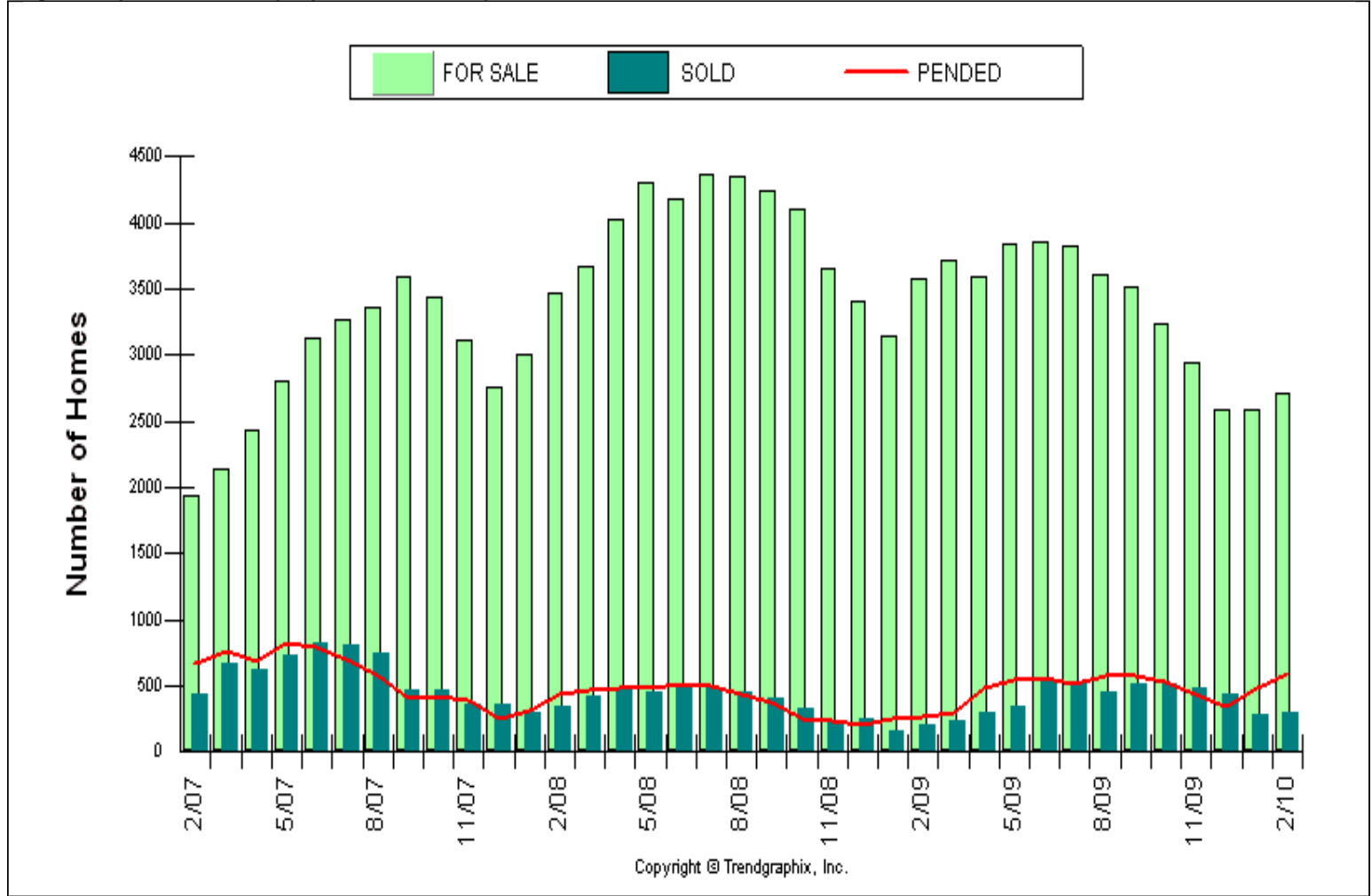


Published Mar. 2010\*\*

**Location : EASTSIDE (excl. Snoqualmie Pass (948))**  
**Number of Homes For Sale vs. Sold vs. Pending (Last 3 years)**  
**Price Range: \$0 - No Limit, SQFT Range: 0 - No Limit**  
**Single Family Homes - All Property Statuses - All Properties**

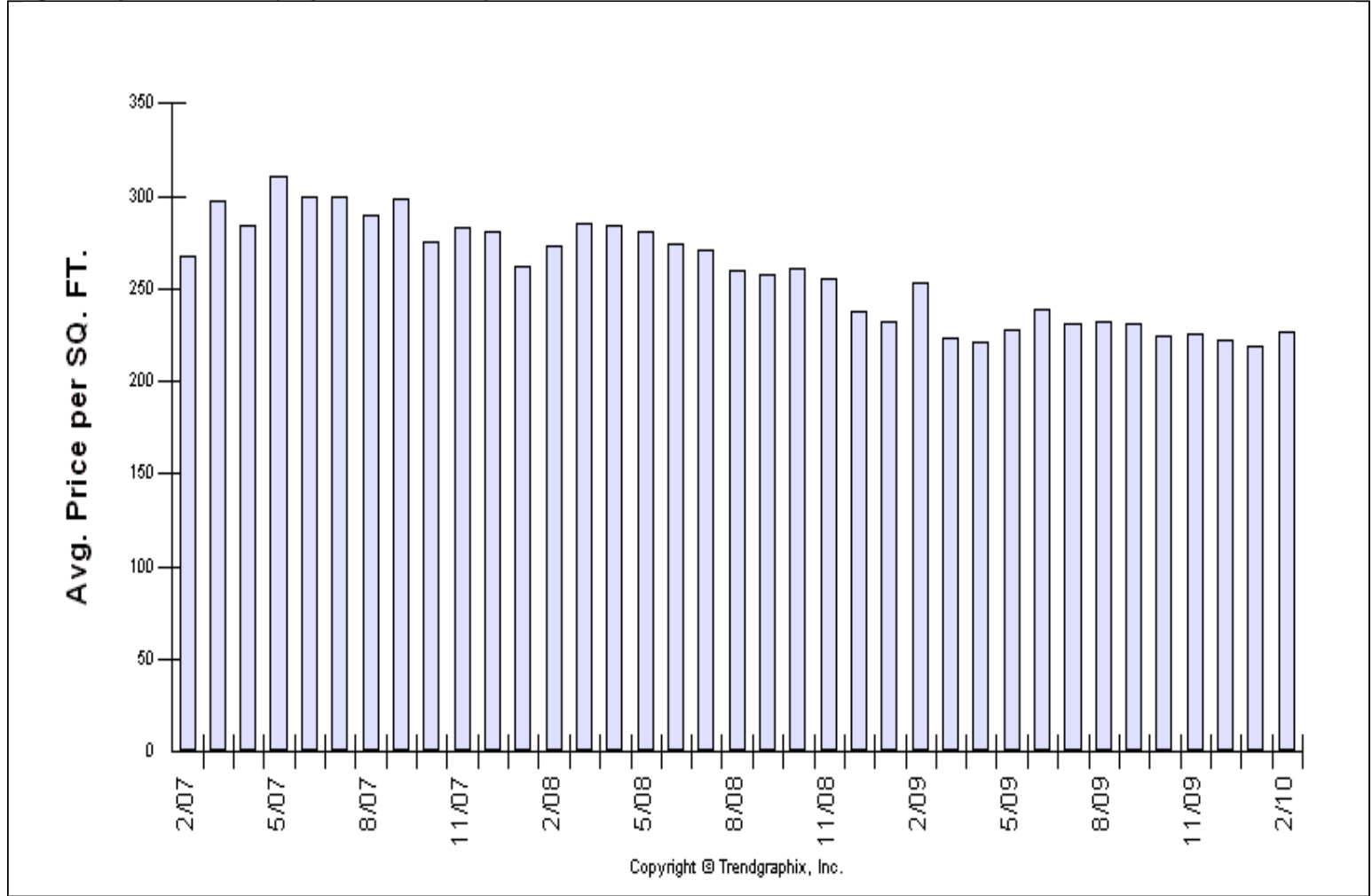


	1 month			1 year			3 years		
	Jan 10	Feb 10	% Change	Feb 09	Feb 10	% Change	Feb 07	Feb 10	% Change
For Sale	2588	2706	4.6% ↑	3574	2706	-24.3% ↓	1939	2706	39.6% ↑
Sold	277	301	8.7% ↑	202	301	49% ↑	441	301	-31.7% ↓
Pended	477	599	25.6% ↑	264	599	126.9% ↑	662	599	-9.5% ↓

\*\*All reports are published Mar. 2010, based on data available at the end of Feb. 2010. This representation is based in whole or in part on data supplied by the NWMLS. Neither the Board or its MLS guarantees or is in any way responsible for its accuracy. Data maintained by the Board or its MLS may not reflect all real estate activity in the market. Report reflects activity by all brokers participated in the MLS.

Published Mar. 2010\*\*

**Location : EASTSIDE (excl. Snoqualmie Pass (948))**  
**Average Home Sold Price per SQFT (Last 3 years)**  
**Price Range: \$0 - No Limit, SQFT Range: 0 - No Limit**  
**Single Family Homes - All Property Statuses - All Properties**



	1 month			1 year			3 years		
	Jan 10	Feb 10	% Change	Feb 09	Feb 10	% Change	Feb 07	Feb 10	% Change
Avg. Sq. Ft. Price	219	227	3.6% ↑	254	227	-10.6% ↓	268	227	-15.3% ↓

\*\*All reports are published Mar. 2010, based on data available at the end of Feb. 2010. This representation is based in whole or in part on data supplied by the NWMLS. Neither the Board or its MLS guarantees or is in any way responsible for its accuracy. Data maintained by the Board or its MLS may not reflect all real estate activity in the market. Report reflects activity by all brokers participated in the MLS.

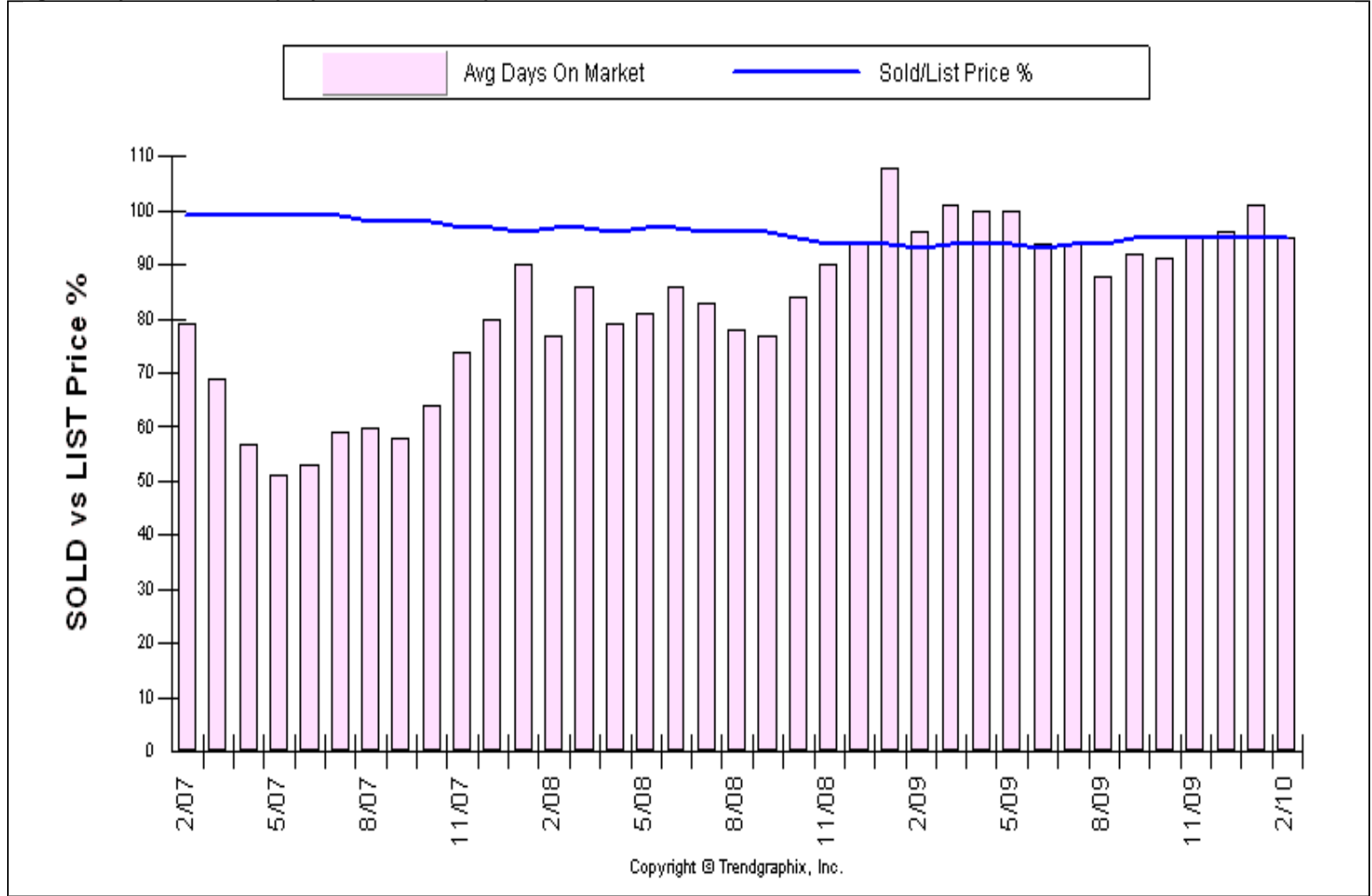
Published Mar. 2010\*\*

**Location : EASTSIDE (excl. Snoqualmie Pass (948))**

**Avg DOM & SP/LP % (Last 3 years)**

**Price Range: \$0 - No Limit, SQFT Range: 0 - No Limit**

**Single Family Homes - All Property Statuses - All Properties**



Copyright © Trendgraphix, Inc.

	1 month			1 year			3 years		
	Jan 10	Feb 10	% Change	Feb 09	Feb 10	% Change	Feb 07	Feb 10	% Change
Avg. Days on Market	101	95	-5.9% ↓	96	95	-1% ↓	79	95	20.3% ↑
Sold/List Diff. %	95	95	0%	93	95	2.2% ↑	99	95	-4% ↓

\*\*All reports are published Mar. 2010, based on data available at the end of Feb. 2010. This representation is based in whole or in part on data supplied by the NWMLS. Neither the Board or its MLS guarantees or is in any way responsible for its accuracy. Data maintained by the Board or its MLS may not reflect all real estate activity in the market. Report reflects activity by all brokers participated in the MLS.

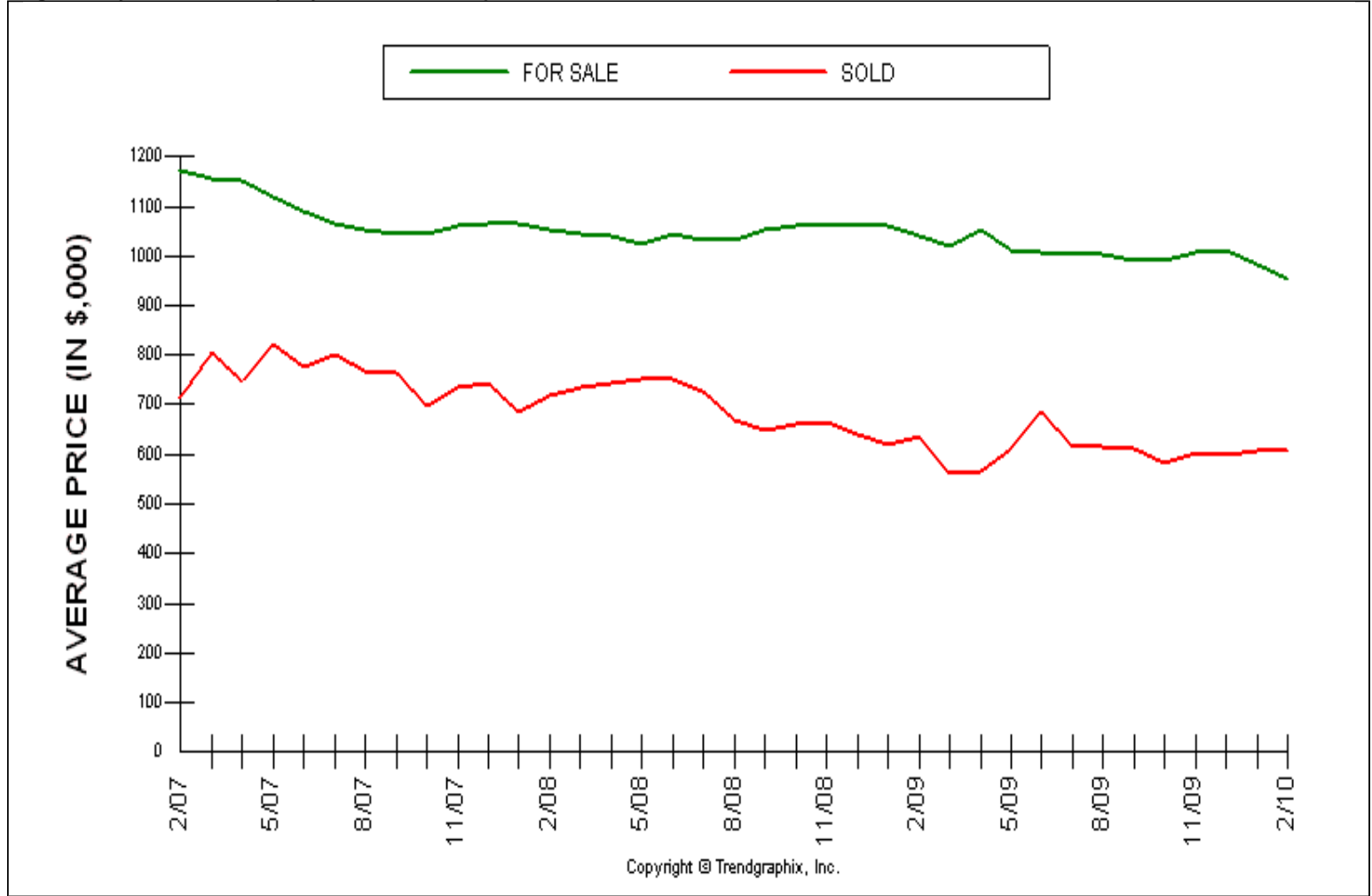
Published Mar. 2010\*\*

**Location : EASTSIDE (excl. Snoqualmie Pass (948))**

**Avg Price For Sale & Sold (Last 3 years)**

**Price Range: \$0 - No Limit, SQFT Range: 0 - No Limit**

**Single Family Homes - All Property Statuses - All Properties**

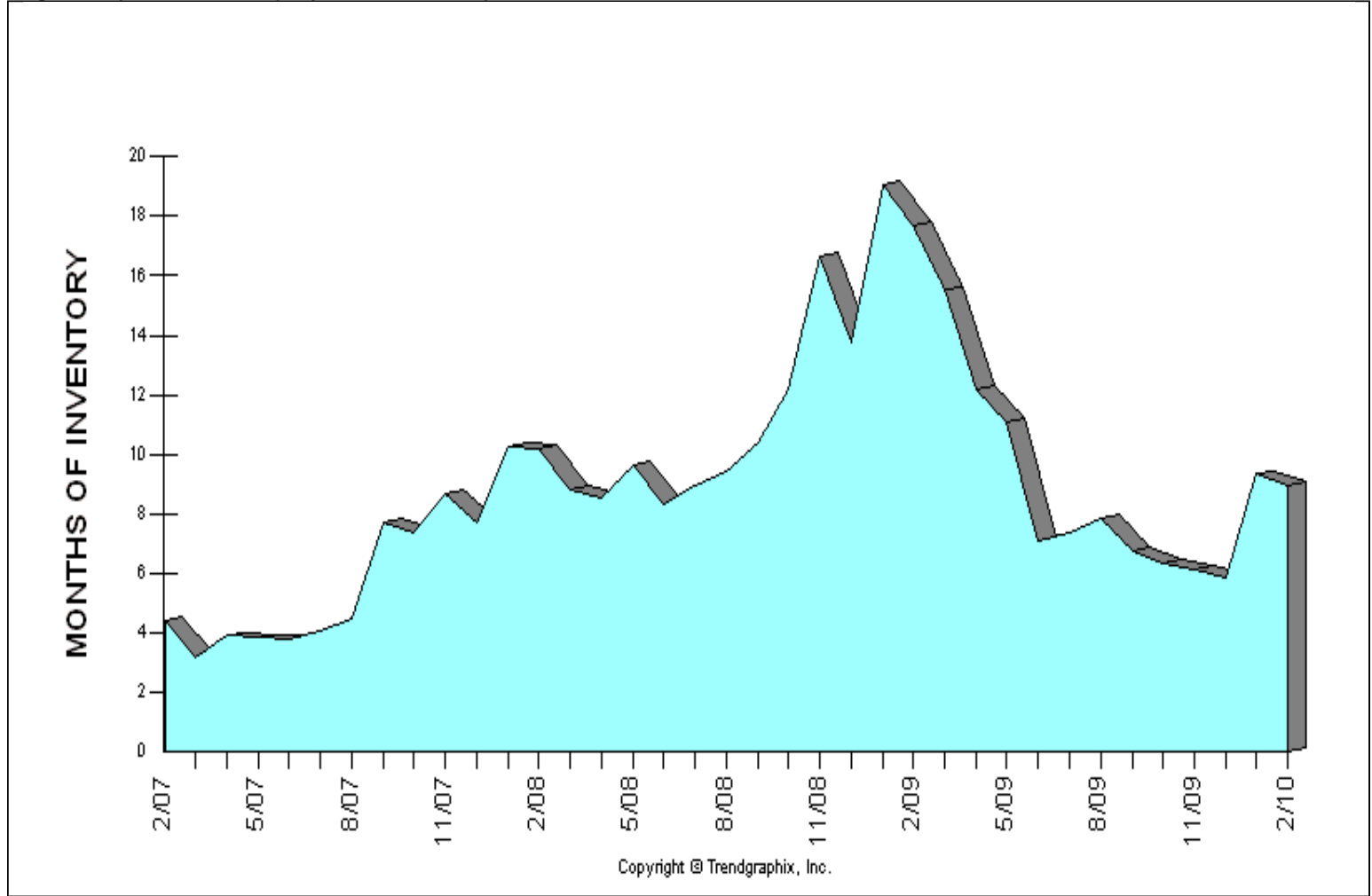


	1 month			1 year			3 years		
	Jan 10	Feb 10	% Change	Feb 09	Feb 10	% Change	Feb 07	Feb 10	% Change
Avg. Active Price	982	954	-2.9% ↓	1041	954	-8.4% ↓	1172	954	-18.6% ↓
Avg. Sold Price	609	607	-0.3% ↓	638	607	-4.9% ↓	715	607	-15.1% ↓

\*\*All reports are published Mar. 2010, based on data available at the end of Feb. 2010. This representation is based in whole or in part on data supplied by the NWMLS. Neither the Board or its MLS guarantees or is in any way responsible for its accuracy. Data maintained by the Board or its MLS may not reflect all real estate activity in the market. Report reflects activity by all brokers participated in the MLS.

Published Mar. 2010\*\*

**Location : EASTSIDE (excl. Snoqualmie Pass (948))**  
**Months of Inventory based on Closed Sales (Last 3 years)**  
**Price Range: \$0 - No Limit, SQFT Range: 0 - No Limit**  
**Single Family Homes - All Property Statuses - All Properties**



	1 month			1 year			3 years		
	Jan 10	Feb 10	% Change	Feb 09	Feb 10	% Change	Feb 07	Feb 10	% Change
Months of Inventory (Closed Sales)	9.3	9	-3.2% ↓	17.7	9	-49.2% ↓	4.4	9	104.5% ↑

\*\*All reports are published Mar. 2010, based on data available at the end of Feb. 2010. This representation is based in whole or in part on data supplied by the NWMLS. Neither the Board or its MLS guarantees or is in any way responsible for its accuracy. Data maintained by the Board or its MLS may not reflect all real estate activity in the market. Report reflects activity by all brokers participated in the MLS.

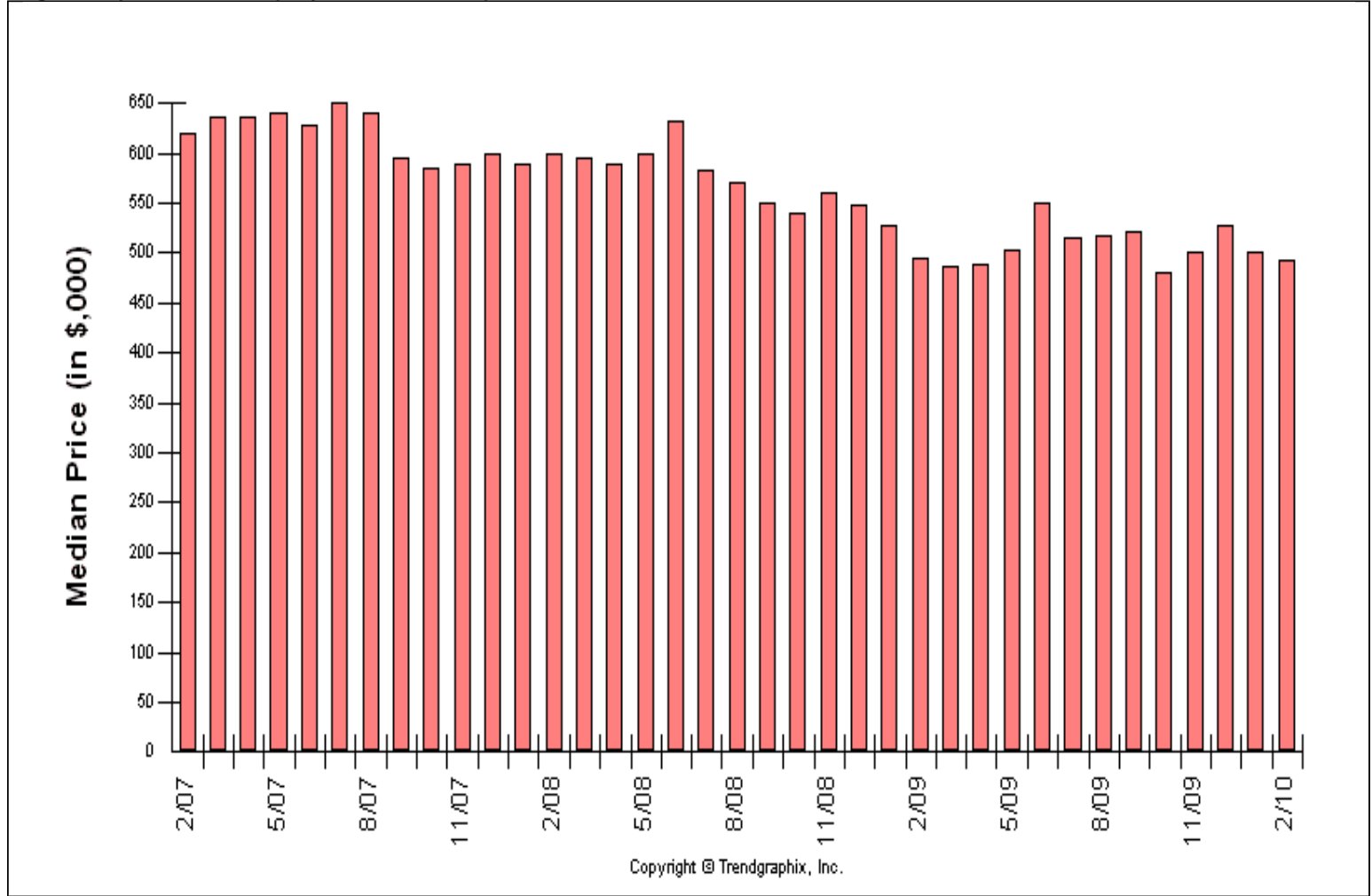
Published Mar. 2010\*\*

**Location : EASTSIDE (excl. Snoqualmie Pass (948))**

**Median Price Sold (Last 3 years)**

**Price Range: \$0 - No Limit, SQFT Range: 0 - No Limit**

**Single Family Homes - All Property Statuses - All Properties**

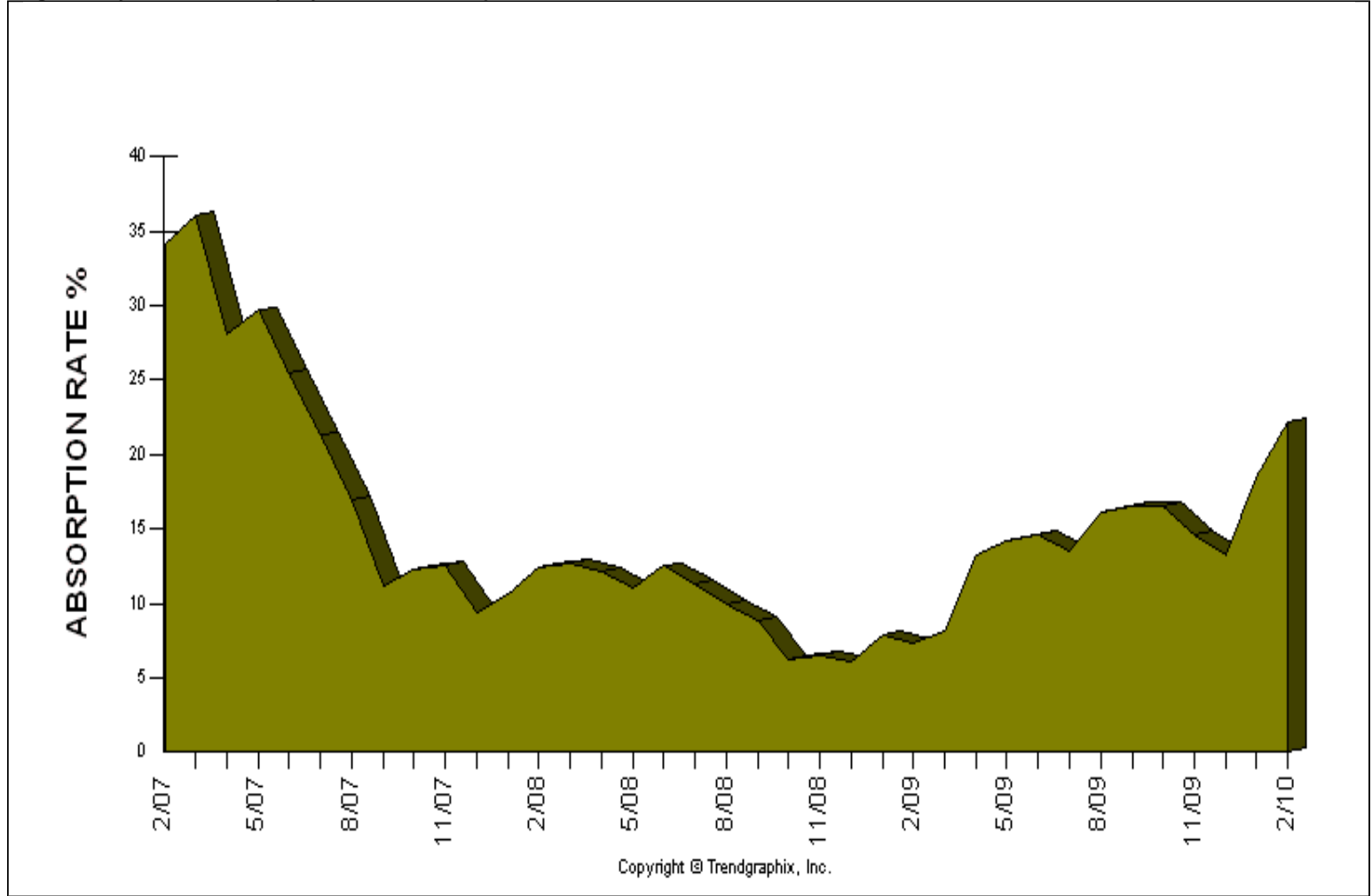


	1 month			1 year			3 years		
	Jan 10	Feb 10	% Change	Feb 09	Feb 10	% Change	Feb 07	Feb 10	% Change
Median Price	500	493	-1.4% ↓	494	493	-0.2% ↓	620	493	-20.5% ↓

\*\*All reports are published Mar. 2010, based on data available at the end of Feb. 2010. This representation is based in whole or in part on data supplied by the NWMLS. Neither the Board or its MLS guarantees or is in any way responsible for its accuracy. Data maintained by the Board or its MLS may not reflect all real estate activity in the market. Report reflects activity by all brokers participated in the MLS.

Published Mar. 2010\*\*

**Location : EASTSIDE (excl. Snoqualmie Pass (948))**  
**Absorption Rate based on Pended Sales (Last 3 years)**  
**Price Range: \$0 - No Limit, SQFT Range: 0 - No Limit**  
**Single Family Homes - All Property Statuses - All Properties**



	1 month			1 year			3 years		
	Jan 10	Feb 10	% Change	Feb 09	Feb 10	% Change	Feb 07	Feb 10	% Change
Absorption Rate (Pended Sales)	18.4	22.1	20.1% ↑	7.4	22.1	198.6% ↑	34.1	22.1	-35.2% ↓

\*\*All reports are published Mar. 2010, based on data available at the end of Feb. 2010. This representation is based in whole or in part on data supplied by the NWMLS. Neither the Board or its MLS guarantees or is in any way responsible for its accuracy. Data maintained by the Board or its MLS may not reflect all real estate activity in the market. Report reflects activity by all brokers participated in the MLS.