

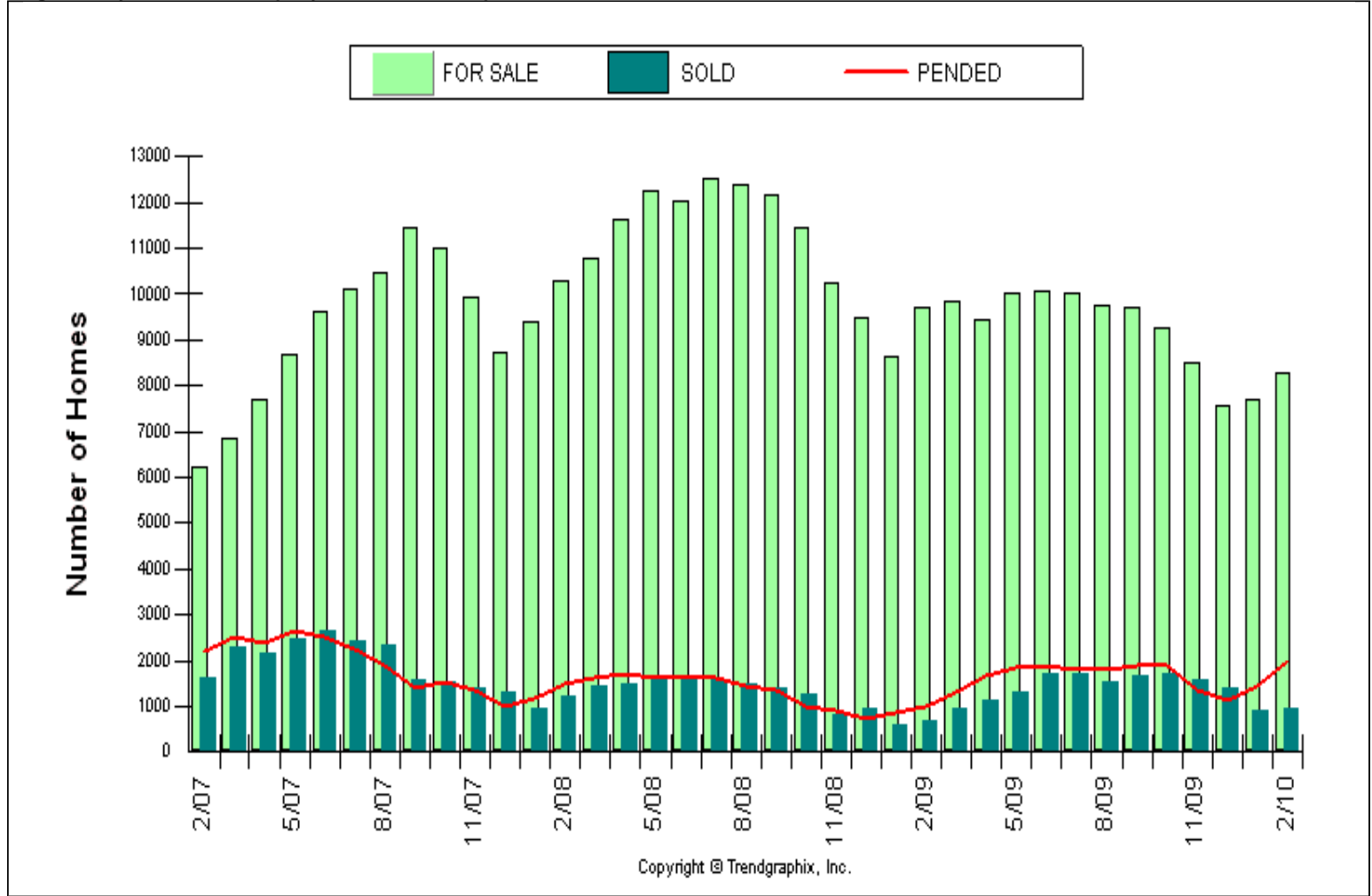
Published Mar. 2010**

Location : **KING COUNTY**

Number of Homes For Sale vs. Sold vs. Pended (Last 3 years)

Price Range: \$0 - No Limit, SQFT Range: 0 - No Limit

Single Family Homes - All Property Statuses - All Properties



	1 month			1 year			3 years		
	Jan 10	Feb 10	% Change	Feb 09	Feb 10	% Change	Feb 07	Feb 10	% Change
For Sale	7706	8261	7.2% ↑	9711	8261	-14.9% ↓	6203	8261	33.2% ↑
Sold	884	967	9.4% ↑	686	967	41% ↑	1617	967	-40.2% ↓
Pended	1454	1981	36.2% ↑	990	1981	100.1% ↑	2191	1981	-9.6% ↓

**All reports are published Mar. 2010, based on data available at the end of Feb. 2010. This representation is based in whole or in part on data supplied by the NWMLS. Neither the Board or its MLS guarantees or is in any way responsible for its accuracy. Data maintained by the Board or its MLS may not reflect all real estate activity in the market. Report reflects activity by all brokers participated in the MLS.

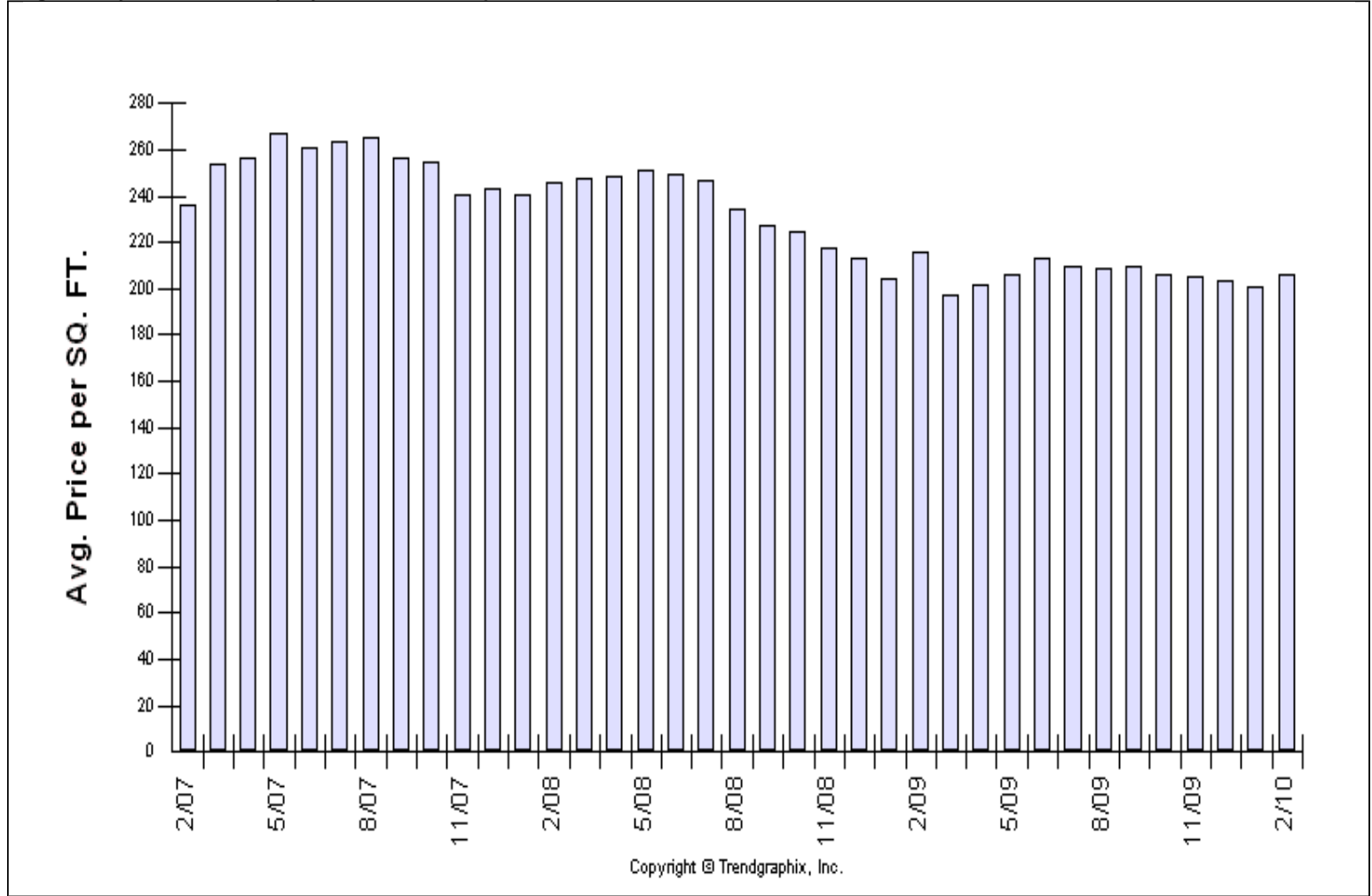
Published Mar. 2010**

Location : KING COUNTY

Average Home Sold Price per SQFT (Last 3 years)

Price Range: \$0 - No Limit, SQFT Range: 0 - No Limit

Single Family Homes - All Property Statuses - All Properties



Avg. Sq. Ft. Price	1 month			1 year			3 years		
	Jan 10	Feb 10	% Change	Feb 09	Feb 10	% Change	Feb 07	Feb 10	% Change
	201	206	2.5% ↑	215	206	-4.3% ↓	236	206	-12.7% ↓

**All reports are published Mar. 2010, based on data available at the end of Feb. 2010. This representation is based in whole or in part on data supplied by the NWMLS. Neither the Board or its MLS guarantees or is in any way responsible for its accuracy. Data maintained by the Board or its MLS may not reflect all real estate activity in the market. Report reflects activity by all brokers participated in the MLS.

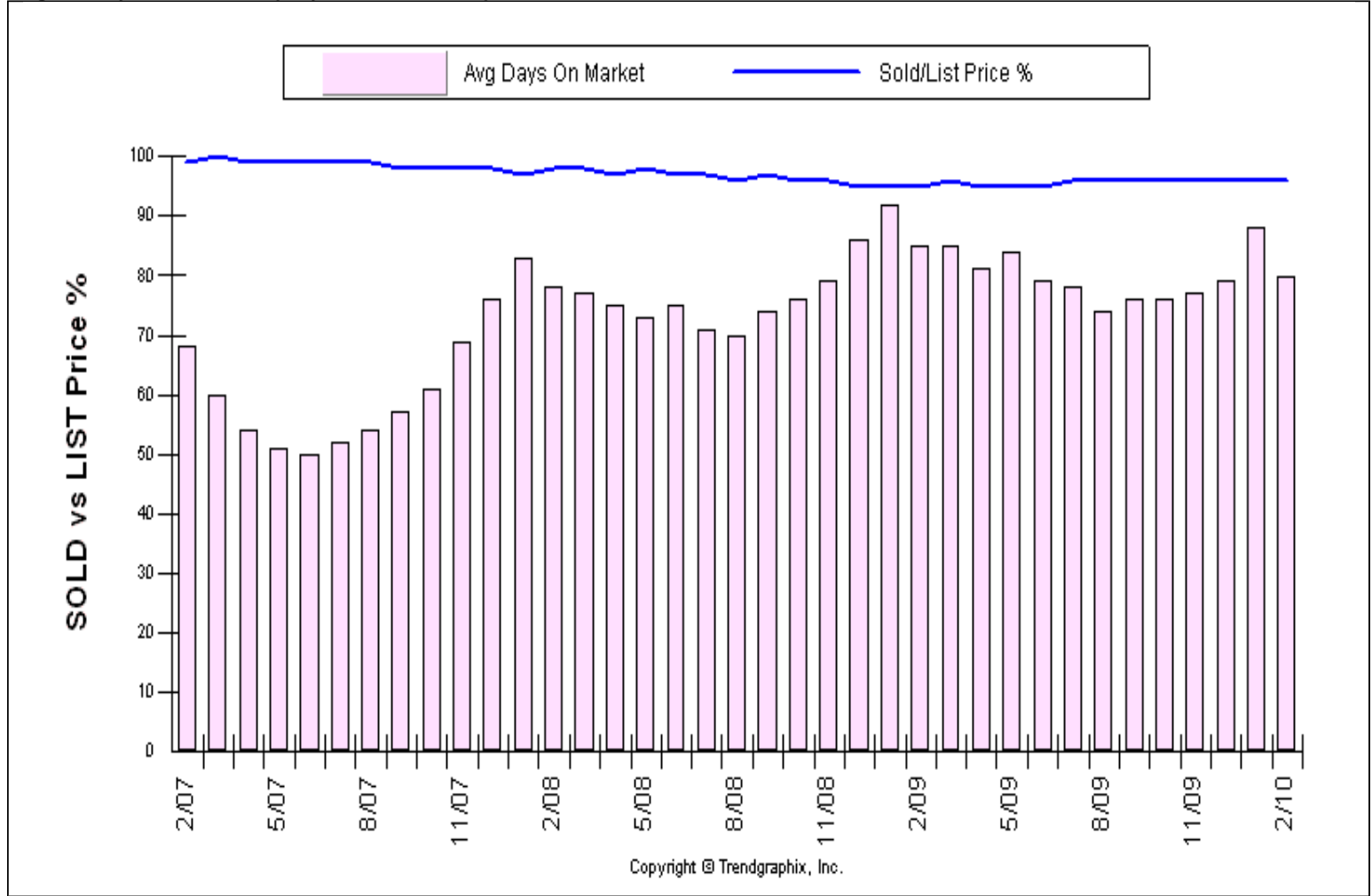
Published Mar. 2010**

Location : **KING COUNTY**

Avg DOM & SP/LP % (Last 3 years)

Price Range: \$0 - No Limit, SQFT Range: 0 - No Limit

Single Family Homes - All Property Statuses - All Properties



	1 month			1 year			3 years		
	Jan 10	Feb 10	% Change	Feb 09	Feb 10	% Change	Feb 07	Feb 10	% Change
Avg. Days on Market	88	80	-9.1% ↓	85	80	-5.9% ↓	68	80	17.6% ↑
Sold/List Diff. %	96	96	0%	95	96	1.1% ↑	99	96	-3% ↓

**All reports are published Mar. 2010, based on data available at the end of Feb. 2010. This representation is based in whole or in part on data supplied by the NWMLS. Neither the Board or its MLS guarantees or is in any way responsible for its accuracy. Data maintained by the Board or its MLS may not reflect all real estate activity in the market. Report reflects activity by all brokers participated in the MLS.

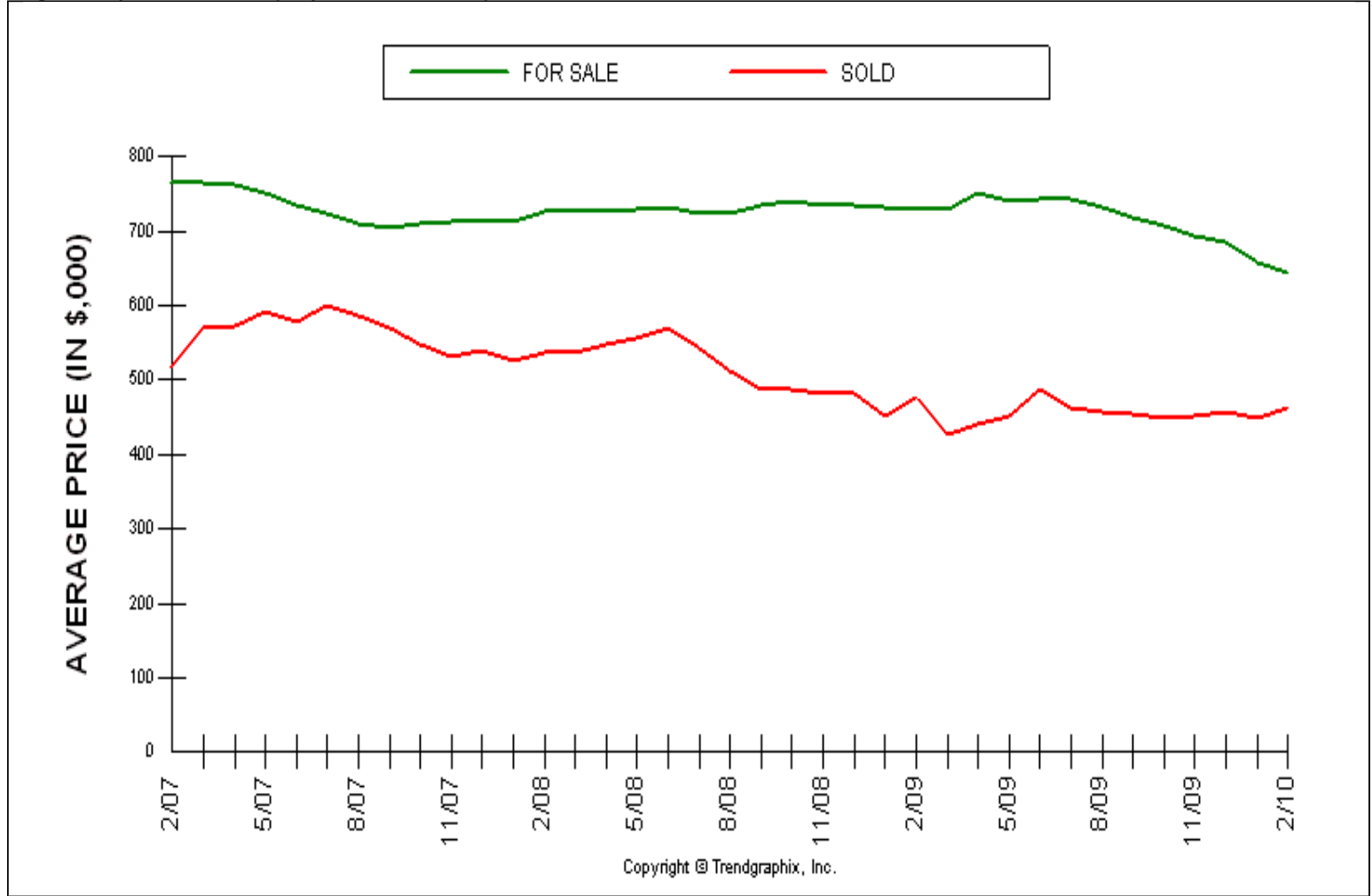
Published Mar. 2010**

Location : **KING COUNTY**

Avg Price For Sale & Sold (Last 3 years)

Price Range: \$0 - No Limit, SQFT Range: 0 - No Limit

Single Family Homes - All Property Statuses - All Properties



	1 month			1 year			3 years		
	Jan 10	Feb 10	% Change	Feb 09	Feb 10	% Change	Feb 07	Feb 10	% Change
Avg. Active Price	659	643	-2.4% ↓	729	643	-11.8% ↓	766	643	-16.1% ↓
Avg. Sold Price	450	462	2.7% ↑	477	462	-3.1% ↓	517	462	-10.6% ↓

**All reports are published Mar. 2010, based on data available at the end of Feb. 2010. This representation is based in whole or in part on data supplied by the NWMLS. Neither the Board or its MLS guarantees or is in any way responsible for its accuracy. Data maintained by the Board or its MLS may not reflect all real estate activity in the market. Report reflects activity by all brokers participated in the MLS.

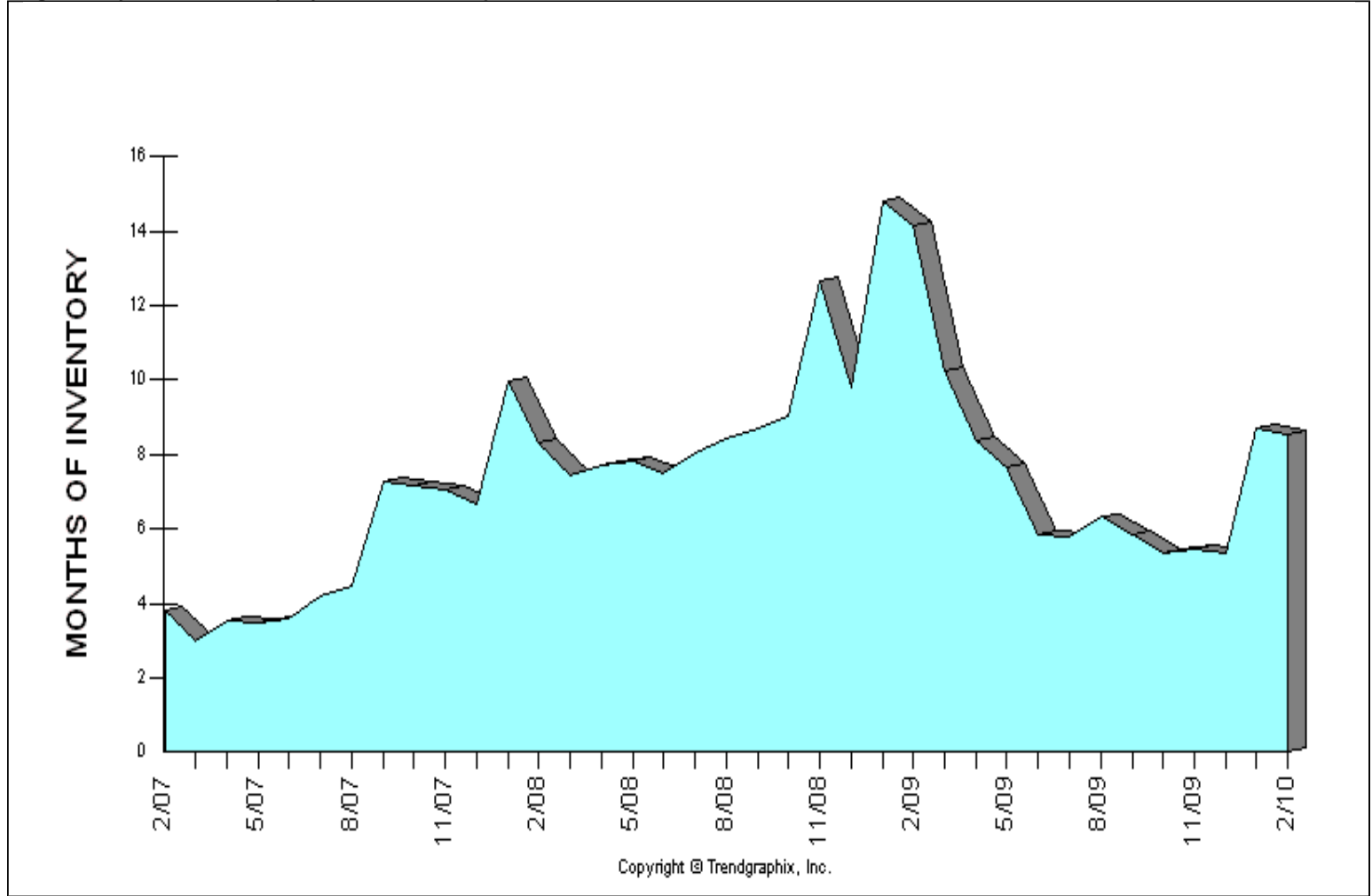
Published Mar. 2010**

Location : KING COUNTY

Months of Inventory based on Closed Sales (Last 3 years)

Price Range: \$0 - No Limit, SQFT Range: 0 - No Limit

Single Family Homes - All Property Statuses - All Properties



	1 month			1 year			3 years		
	Jan 10	Feb 10	% Change	Feb 09	Feb 10	% Change	Feb 07	Feb 10	% Change
Months of Inventory (Closed Sales)	8.7	8.5	-2.3% ↓	14.2	8.5	-40.1% ↓	3.8	8.5	123.7% ↑

**All reports are published Mar. 2010, based on data available at the end of Feb. 2010. This representation is based in whole or in part on data supplied by the NWMLS. Neither the Board or its MLS guarantees or is in any way responsible for its accuracy. Data maintained by the Board or its MLS may not reflect all real estate activity in the market. Report reflects activity by all brokers participated in the MLS.

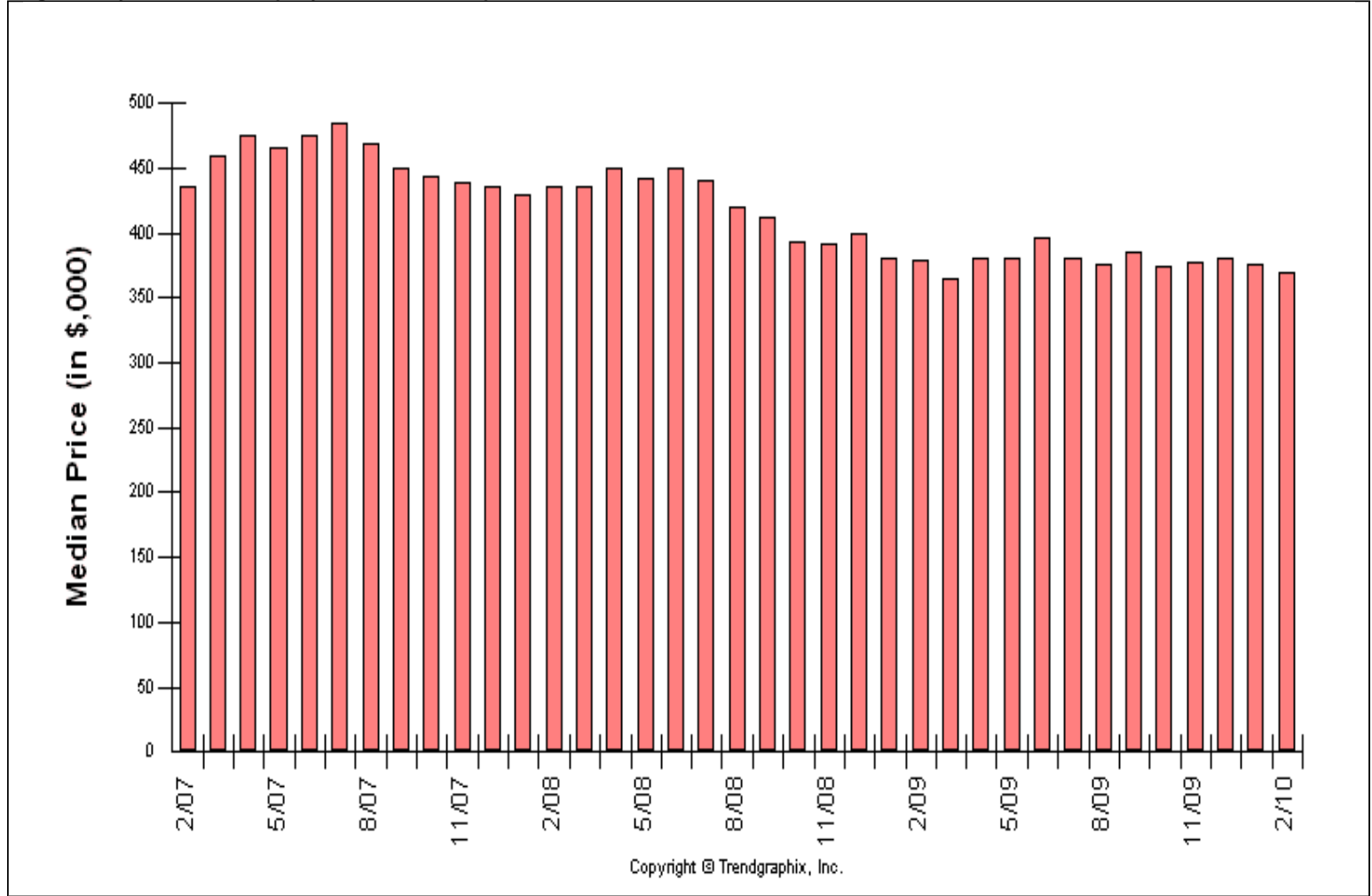
Published Mar. 2010**

Location : KING COUNTY

Median Price Sold (Last 3 years)

Price Range: \$0 - No Limit, SQFT Range: 0 - No Limit

Single Family Homes - All Property Statuses - All Properties



	1 month			1 year			3 years		
	Jan 10	Feb 10	% Change	Feb 09	Feb 10	% Change	Feb 07	Feb 10	% Change
Median Price	375	370	-1.3% ↓	379	370	-2.4% ↓	435	370	-14.9% ↓

**All reports are published Mar. 2010, based on data available at the end of Feb. 2010. This representation is based in whole or in part on data supplied by the NWMLS. Neither the Board or its MLS guarantees or is in any way responsible for its accuracy. Data maintained by the Board or its MLS may not reflect all real estate activity in the market. Report reflects activity by all brokers participated in the MLS.

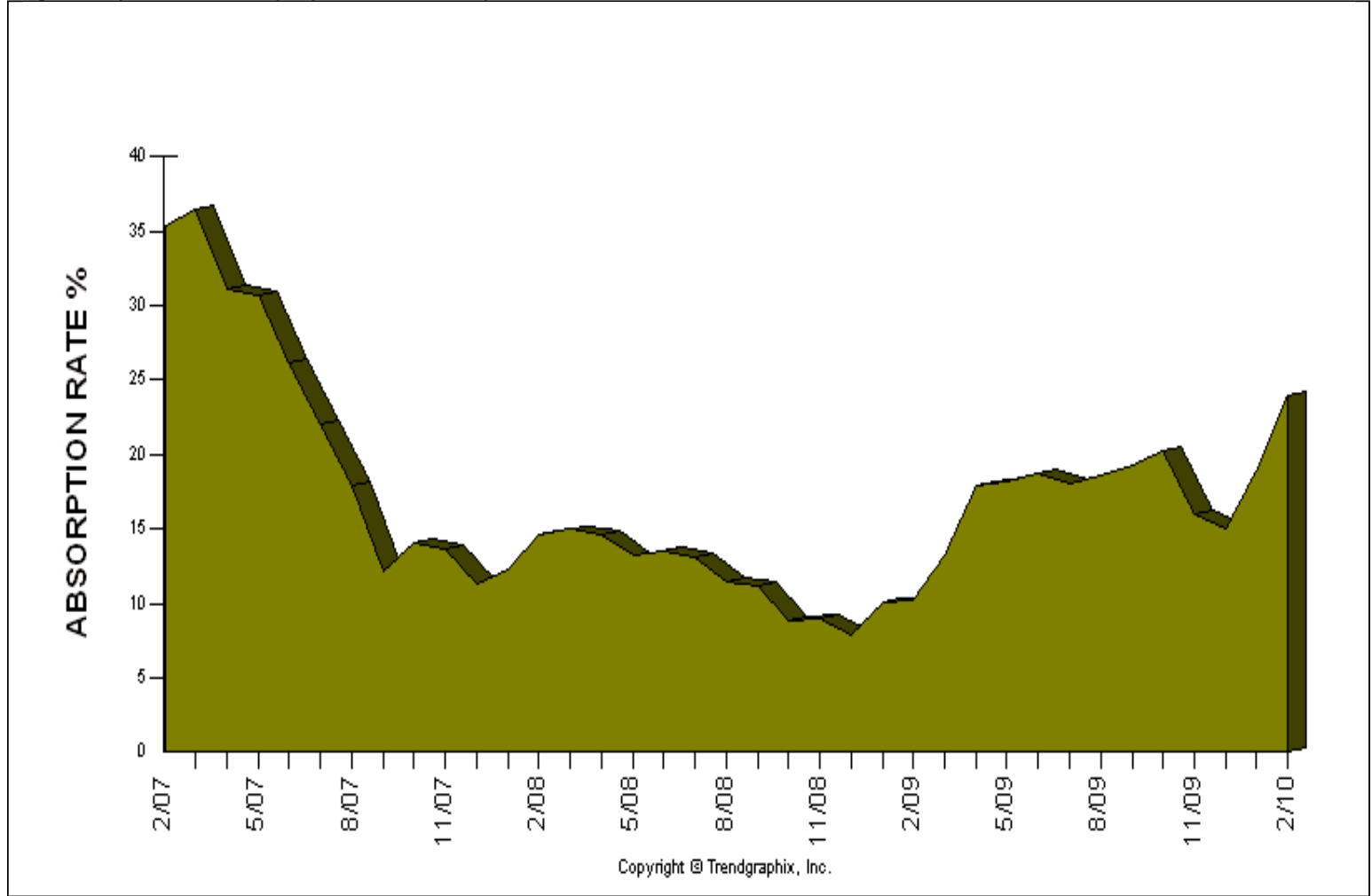
Published Mar. 2010**

Location : KING COUNTY

Absorption Rate based on Pended Sales (Last 3 years)

Price Range: \$0 - No Limit, SQFT Range: 0 - No Limit

Single Family Homes - All Property Statuses - All Properties



	1 month			1 year			3 years		
	Jan 10	Feb 10	% Change	Feb 09	Feb 10	% Change	Feb 07	Feb 10	% Change
Absorption Rate (Pended Sales)	18.9	24	27% ↑	10.2	24	135.3% ↑	35.3	24	-32% ↓

**All reports are published Mar. 2010, based on data available at the end of Feb. 2010. This representation is based in whole or in part on data supplied by the NWMLS. Neither the Board or its MLS guarantees or is in any way responsible for its accuracy. Data maintained by the Board or its MLS may not reflect all real estate activity in the market. Report reflects activity by all brokers participated in the MLS.