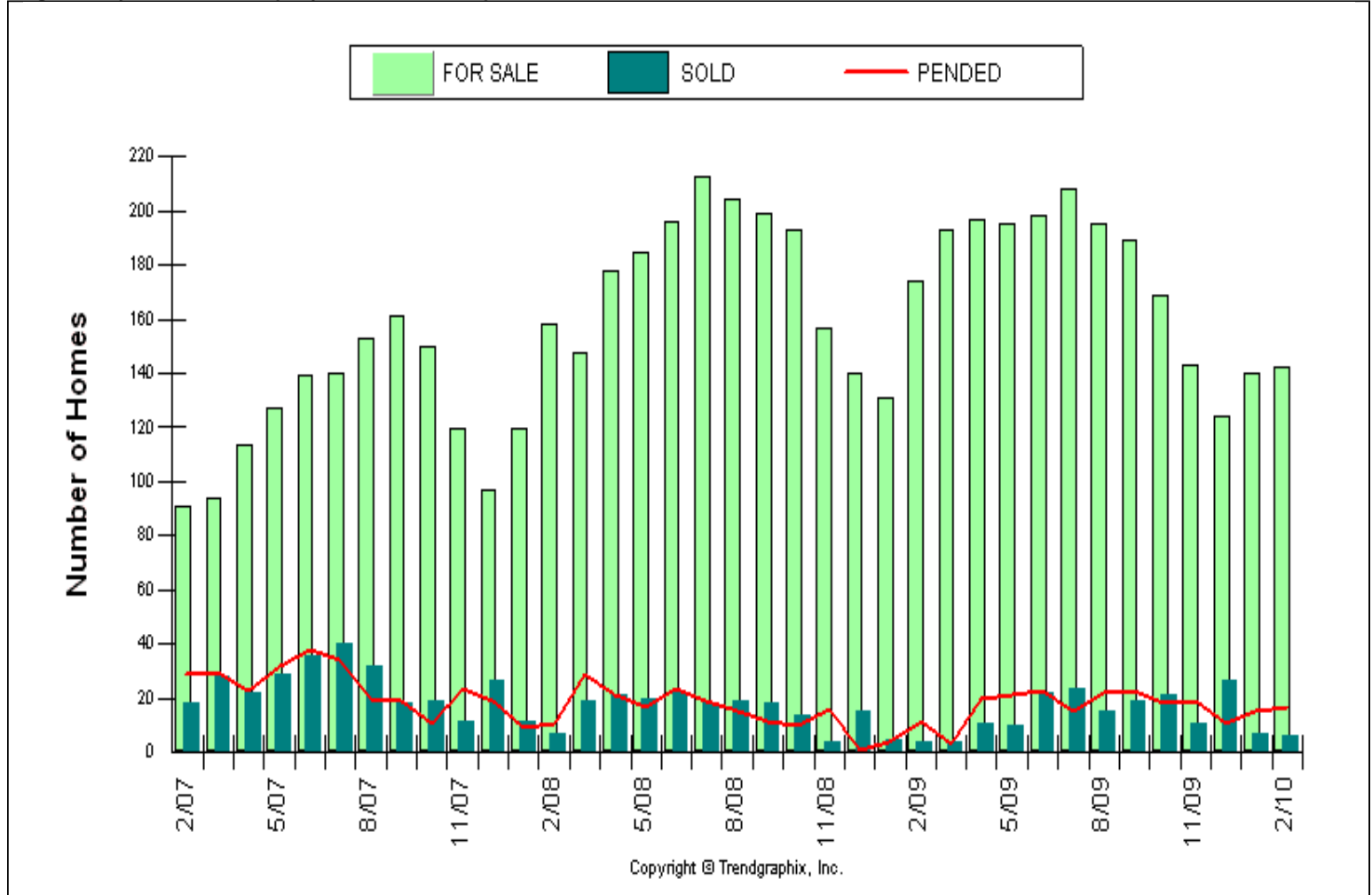


Published Mar. 2010**

Location : Mercer Island (510)
Number of Homes For Sale vs. Sold vs. Pended (Last 3 years)
Price Range: \$0 - No Limit, SQFT Range: 0 - No Limit
Single Family Homes - All Property Statuses - All Properties

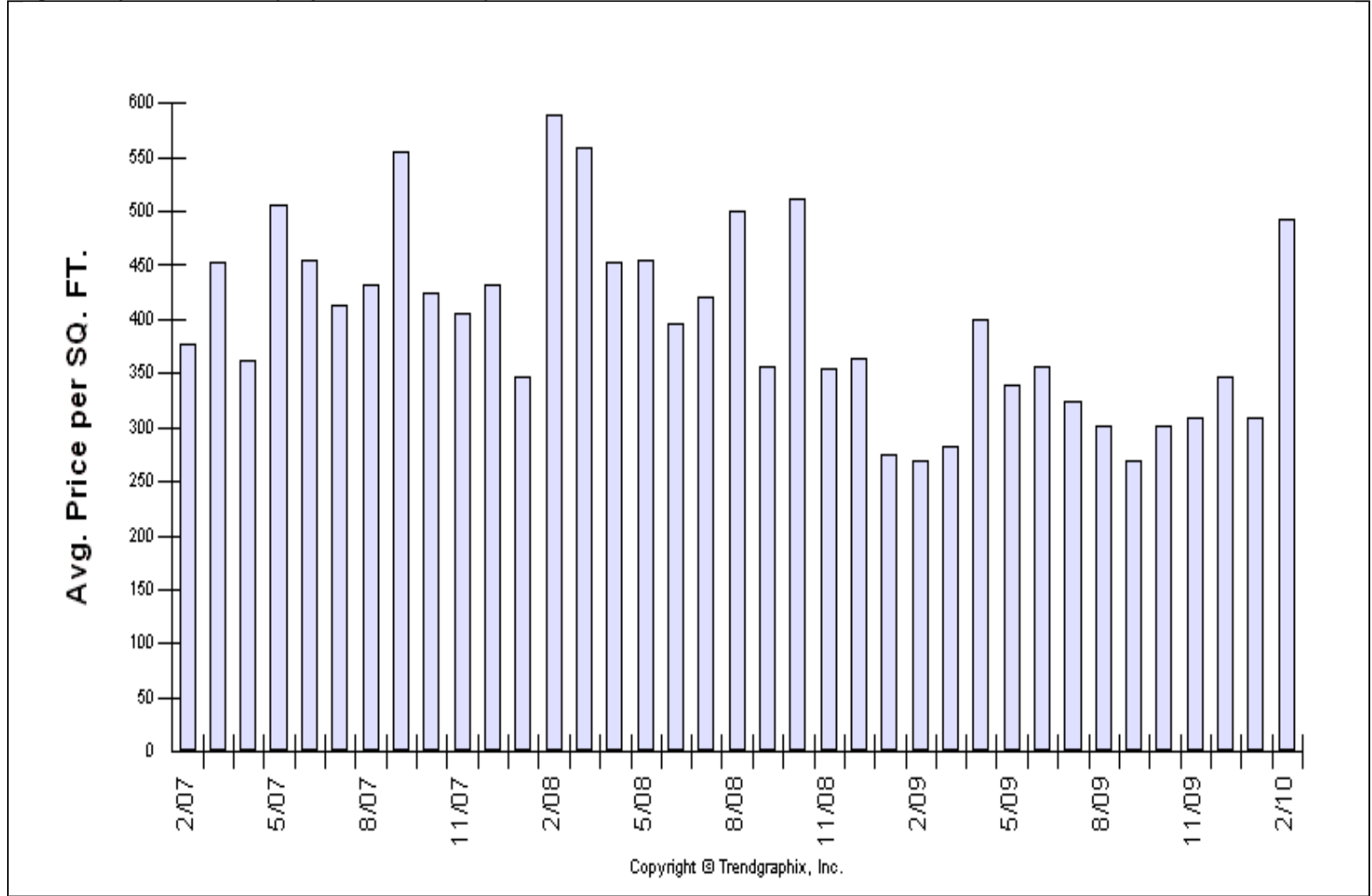


	1 month			1 year			3 years		
	Jan 10	Feb 10	% Change	Feb 09	Feb 10	% Change	Feb 07	Feb 10	% Change
For Sale	140	142	1.4% ↑	174	142	-18.4% ↓	91	142	56% ↑
Sold	7	6	-14.3% ↓	4	6	50% ↑	18	6	-66.7% ↓
Pended	15	17	13.3% ↑	12	17	41.7% ↑	29	17	-41.4% ↓

**All reports are published Mar. 2010, based on data available at the end of Feb. 2010. This representation is based in whole or in part on data supplied by the NWMLS. Neither the Board or its MLS guarantees or is in any way responsible for its accuracy. Data maintained by the Board or its MLS may not reflect all real estate activity in the market. Report reflects activity by all brokers participated in the MLS.

Published Mar. 2010**

Location : Mercer Island (510)
Average Home Sold Price per SQFT (Last 3 years)
Price Range: \$0 - No Limit, SQFT Range: 0 - No Limit
Single Family Homes - All Property Statuses - All Properties



	1 month			1 year			3 years		
	Jan 10	Feb 10	% Change	Feb 09	Feb 10	% Change	Feb 07	Feb 10	% Change
Avg. Sq. Ft. Price	310	493	59.3% ↑	269	493	83.1% ↑	377	493	30.8% ↑

**All reports are published Mar. 2010, based on data available at the end of Feb. 2010. This representation is based in whole or in part on data supplied by the NWMLS. Neither the Board or its MLS guarantees or is in any way responsible for its accuracy. Data maintained by the Board or its MLS may not reflect all real estate activity in the market. Report reflects activity by all brokers participated in the MLS.

Published Mar. 2010**

Location : Mercer Island (510)
Avg DOM & SP/LP % (Last 3 years)
Price Range: \$0 - No Limit, SQFT Range: 0 - No Limit
Single Family Homes - All Property Statuses - All Properties



	1 month			1 year			3 years		
	Jan 10	Feb 10	% Change	Feb 09	Feb 10	% Change	Feb 07	Feb 10	% Change
Avg. Days on Market	88	48	-45.5% ↓	158	48	-69.6% ↓	84	48	-42.9% ↓
Sold/List Diff. %	91	92	1.1% ↑	93	92	-1.1% ↓	100	92	-8% ↓

**All reports are published Mar. 2010, based on data available at the end of Feb. 2010. This representation is based in whole or in part on data supplied by the NWMLS. Neither the Board or its MLS guarantees or is in any way responsible for its accuracy. Data maintained by the Board or its MLS may not reflect all real estate activity in the market. Report reflects activity by all brokers participated in the MLS.

Published Mar. 2010**

Location : Mercer Island (510)
Avg Price For Sale & Sold (Last 3 years)
Price Range: \$0 - No Limit, SQFT Range: 0 - No Limit
Single Family Homes - All Property Statuses - All Properties

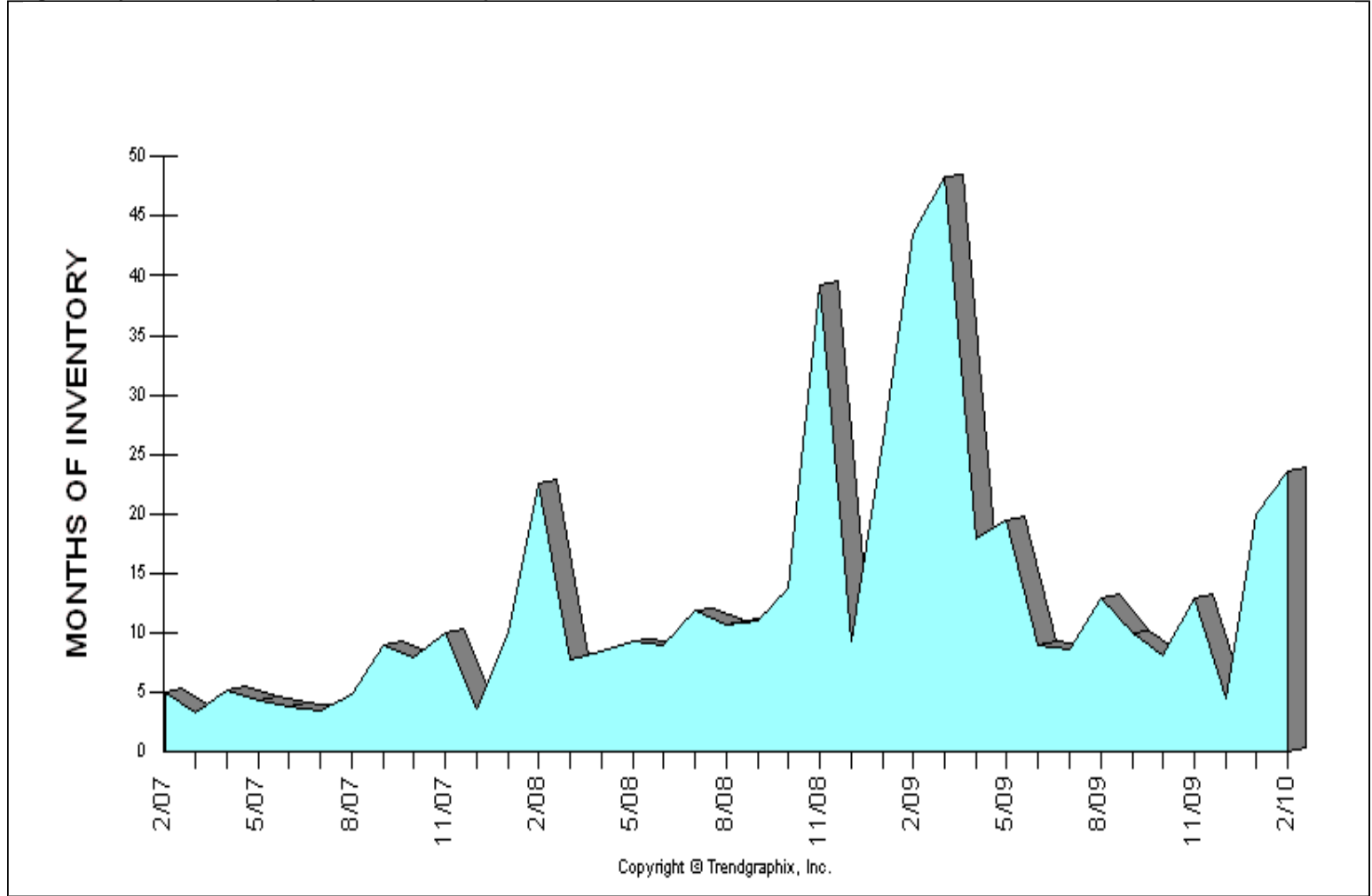


	1 month			1 year			3 years		
	Jan 10	Feb 10	% Change	Feb 09	Feb 10	% Change	Feb 07	Feb 10	% Change
Avg. Active Price	2182	2108	-3.4% ↓	2162	2108	-2.5% ↓	3608	2108	-41.6% ↓
Avg. Sold Price	962	1814	88.6% ↑	665	1814	172.8% ↑	1238	1814	46.5% ↑

**All reports are published Mar. 2010, based on data available at the end of Feb. 2010. This representation is based in whole or in part on data supplied by the NWMLS. Neither the Board or its MLS guarantees or is in any way responsible for its accuracy. Data maintained by the Board or its MLS may not reflect all real estate activity in the market. Report reflects activity by all brokers participated in the MLS.

Published Mar. 2010**

Location : Mercer Island (510)
Months of Inventory based on Closed Sales (Last 3 years)
Price Range: \$0 - No Limit, SQFT Range: 0 - No Limit
Single Family Homes - All Property Statuses - All Properties

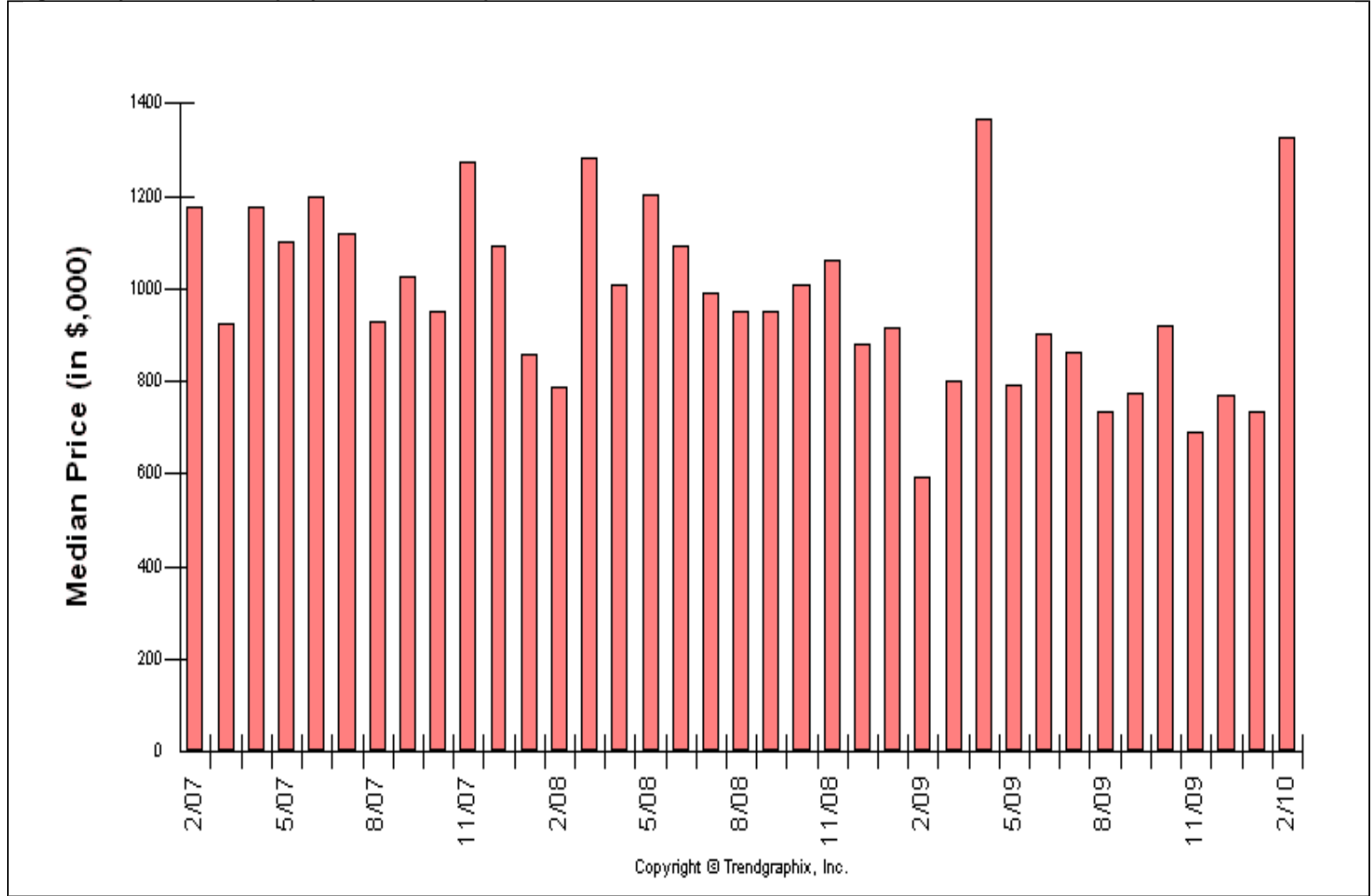


	1 month			1 year			3 years		
	Jan 10	Feb 10	% Change	Feb 09	Feb 10	% Change	Feb 07	Feb 10	% Change
Months of Inventory (Closed Sales)	20	23.7	18.5% ↑	43.5	23.7	-45.5% ↓	5.1	23.7	364.7% ↑

**All reports are published Mar. 2010, based on data available at the end of Feb. 2010. This representation is based in whole or in part on data supplied by the NWMLS. Neither the Board or its MLS guarantees or is in any way responsible for its accuracy. Data maintained by the Board or its MLS may not reflect all real estate activity in the market. Report reflects activity by all brokers participated in the MLS.

Published Mar. 2010**

Location : Mercer Island (510)
Median Price Sold (Last 3 years)
Price Range: \$0 - No Limit, SQFT Range: 0 - No Limit
Single Family Homes - All Property Statuses - All Properties

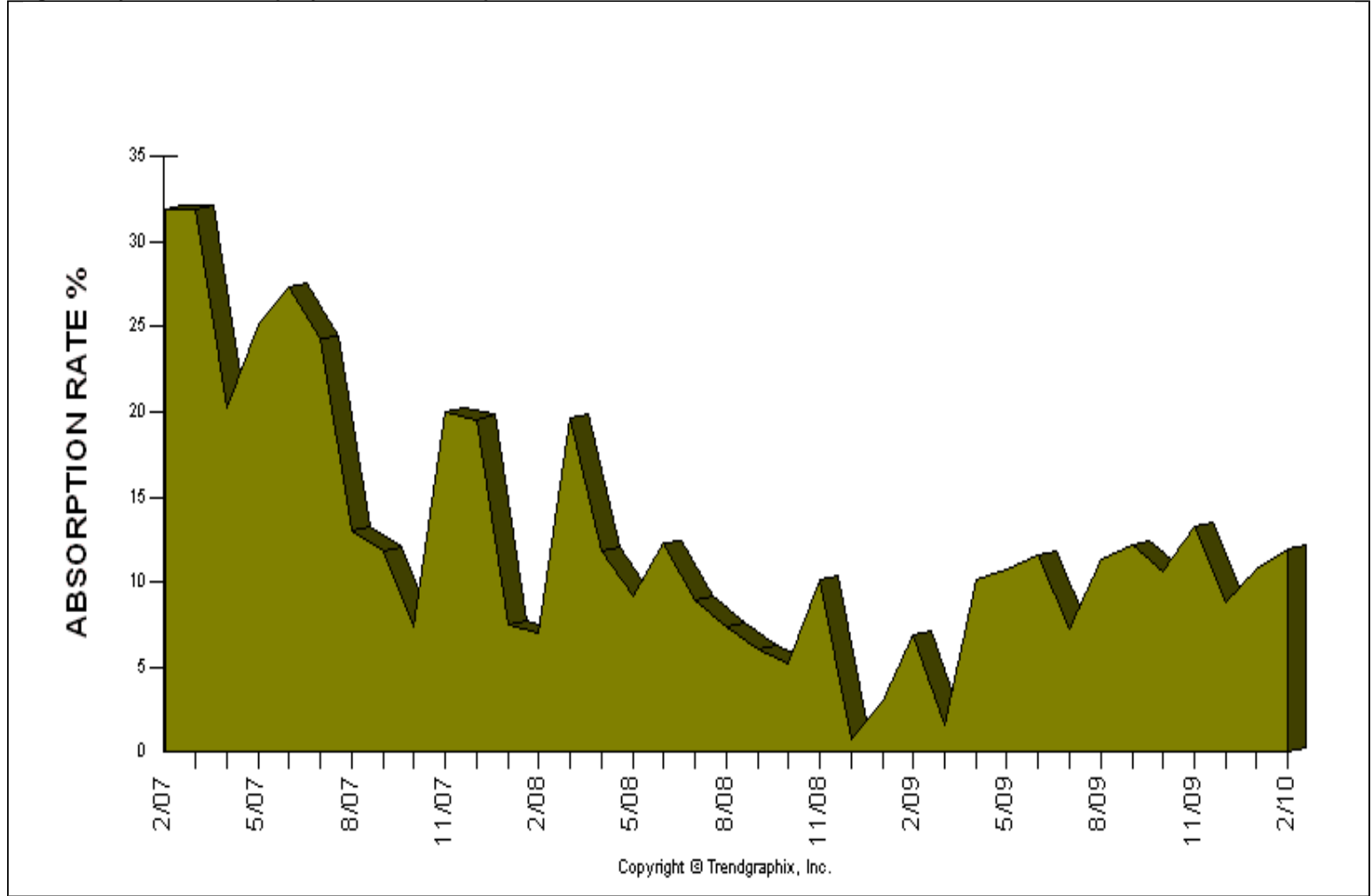


	1 month			1 year			3 years		
	Jan 10	Feb 10	% Change	Feb 09	Feb 10	% Change	Feb 07	Feb 10	% Change
Median Price	735	1325	80.3% ↑	592	1325	123.8% ↑	1175	1325	12.8% ↑

**All reports are published Mar. 2010, based on data available at the end of Feb. 2010. This representation is based in whole or in part on data supplied by the NWMLS. Neither the Board or its MLS guarantees or is in any way responsible for its accuracy. Data maintained by the Board or its MLS may not reflect all real estate activity in the market. Report reflects activity by all brokers participated in the MLS.

Published Mar. 2010**

Location : Mercer Island (510)
Absorption Rate based on Pended Sales (Last 3 years)
Price Range: \$0 - No Limit, SQFT Range: 0 - No Limit
Single Family Homes - All Property Statuses - All Properties



	1 month			1 year			3 years		
	Jan 10	Feb 10	% Change	Feb 09	Feb 10	% Change	Feb 07	Feb 10	% Change
Absorption Rate (Pended Sales)	10.7	12	12.1% ↑	6.9	12	73.9% ↑	31.9	12	-62.4% ↓

**All reports are published Mar. 2010, based on data available at the end of Feb. 2010. This representation is based in whole or in part on data supplied by the NWMLS. Neither the Board or its MLS guarantees or is in any way responsible for its accuracy. Data maintained by the Board or its MLS may not reflect all real estate activity in the market. Report reflects activity by all brokers participated in the MLS.