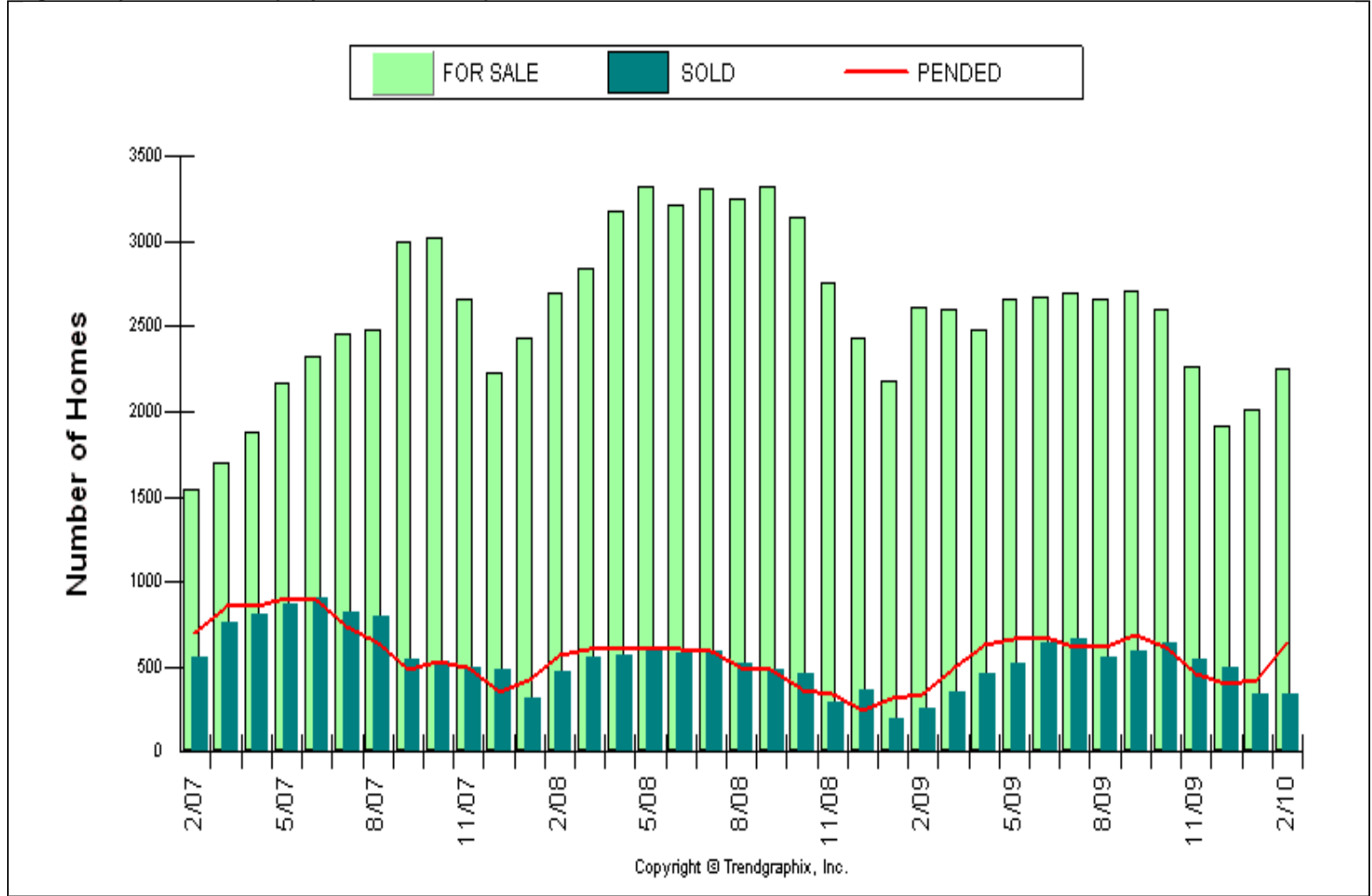


Published Mar. 2010**

Location : METRO (area 140,380,385,390,700,701,705,710,715,720)
Number of Homes For Sale vs. Sold vs. Pended (Last 3 years)
Price Range: \$0 - No Limit, SQFT Range: 0 - No Limit
Single Family Homes - All Property Statuses - All Properties



	1 month			1 year			3 years		
	Jan 10	Feb 10	% Change	Feb 09	Feb 10	% Change	Feb 07	Feb 10	% Change
For Sale	2014	2250	11.7% ↑	2610	2250	-13.8% ↓	1539	2250	46.2% ↑
Sold	334	340	1.8% ↑	258	340	31.8% ↑	551	340	-38.3% ↓
Pended	426	646	51.6% ↑	339	646	90.6% ↑	702	646	-8% ↓

**All reports are published Mar. 2010, based on data available at the end of Feb. 2010. This representation is based in whole or in part on data supplied by the NWMLS. Neither the Board or its MLS guarantees or is in any way responsible for its accuracy. Data maintained by the Board or its MLS may not reflect all real estate activity in the market. Report reflects activity by all brokers participated in the MLS.

Facts and Trends™



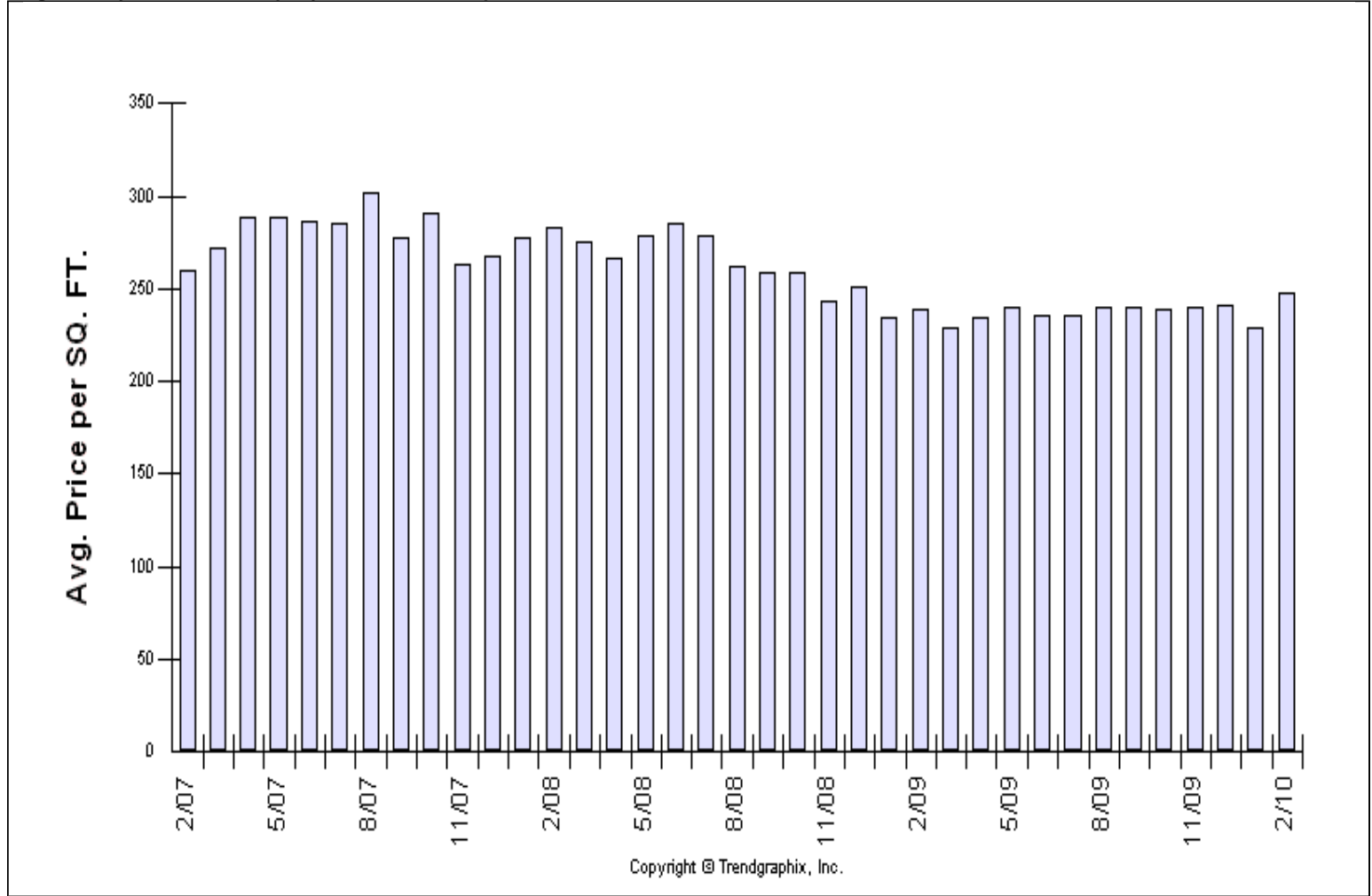
Published Mar. 2010**

Location : METRO (area 140,380,385,390,700,701,705,710,715,720)

Average Home Sold Price per SQFT (Last 3 years)

Price Range: \$0 - No Limit, SQFT Range: 0 - No Limit

Single Family Homes - All Property Statuses - All Properties



	1 month			1 year			3 years		
	Jan 10	Feb 10	% Change	Feb 09	Feb 10	% Change	Feb 07	Feb 10	% Change
Avg. Sq. Ft. Price	229	248	8.4% ↑	239	248	3.7% ↑	260	248	-4.6% ↓

**All reports are published Mar. 2010, based on data available at the end of Feb. 2010. This representation is based in whole or in part on data supplied by the NWMLS. Neither the Board or its MLS guarantees or is in any way responsible for its accuracy. Data maintained by the Board or its MLS may not reflect all real estate activity in the market. Report reflects activity by all brokers participated in the MLS.

Facts and Trends™



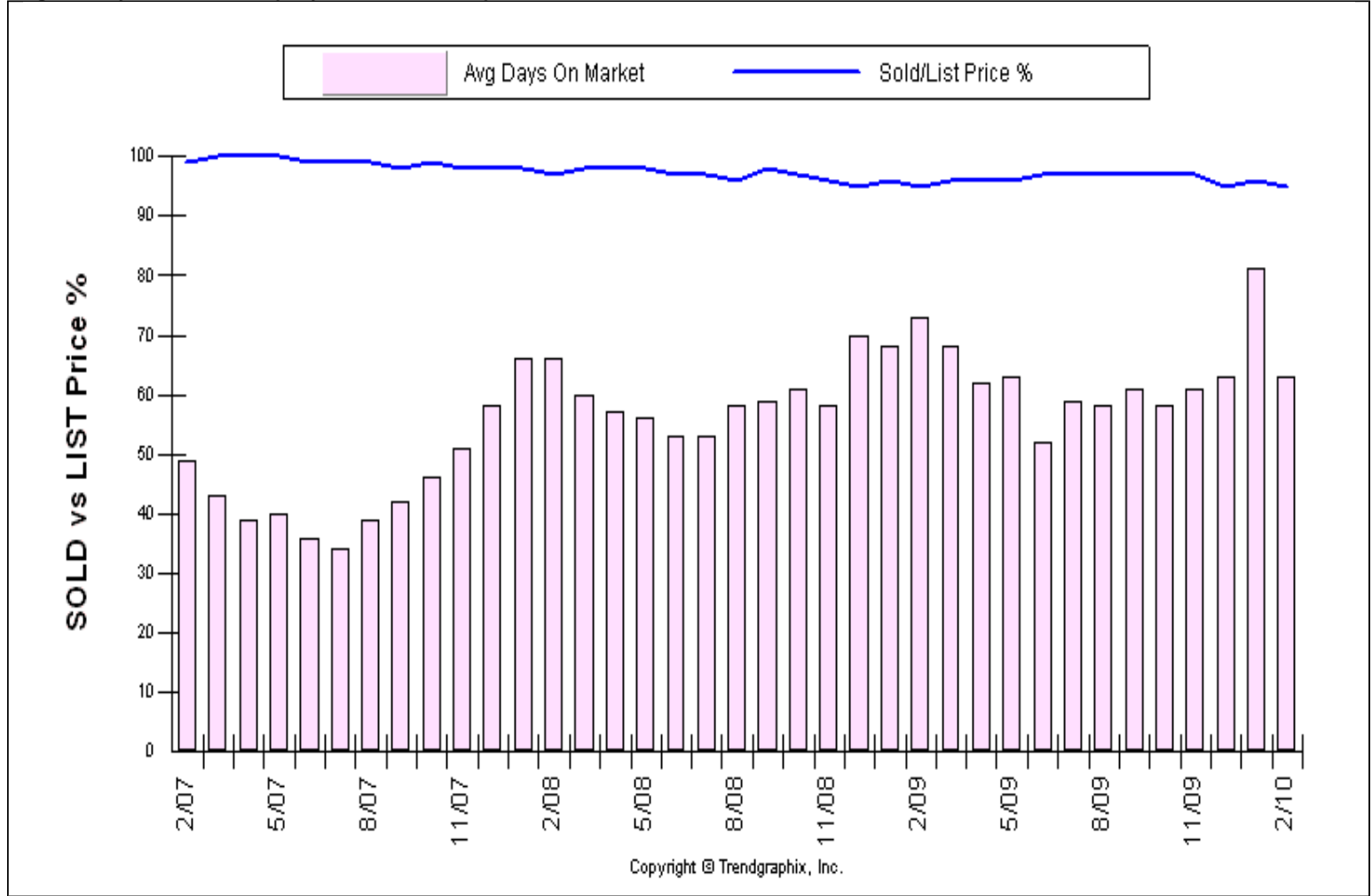
Published Mar. 2010**

Location : METRO (area 140,380,385,390,700,701,705,710,715,720)

Avg DOM & SP/LP % (Last 3 years)

Price Range: \$0 - No Limit, SQFT Range: 0 - No Limit

Single Family Homes - All Property Statuses - All Properties



Copyright © Trendgraphix, Inc.

	1 month			1 year			3 years		
	Jan 10	Feb 10	% Change	Feb 09	Feb 10	% Change	Feb 07	Feb 10	% Change
Avg. Days on Market	81	63	-22.2% ↓	73	63	-13.7% ↓	49	63	28.6% ↑
Sold/List Diff. %	96	95	-1% ↓	95	95	0%	99	95	-4% ↓

**All reports are published Mar. 2010, based on data available at the end of Feb. 2010. This representation is based in whole or in part on data supplied by the NWMLS. Neither the Board or its MLS guarantees or is in any way responsible for its accuracy. Data maintained by the Board or its MLS may not reflect all real estate activity in the market. Report reflects activity by all brokers participated in the MLS.

Facts and Trends™



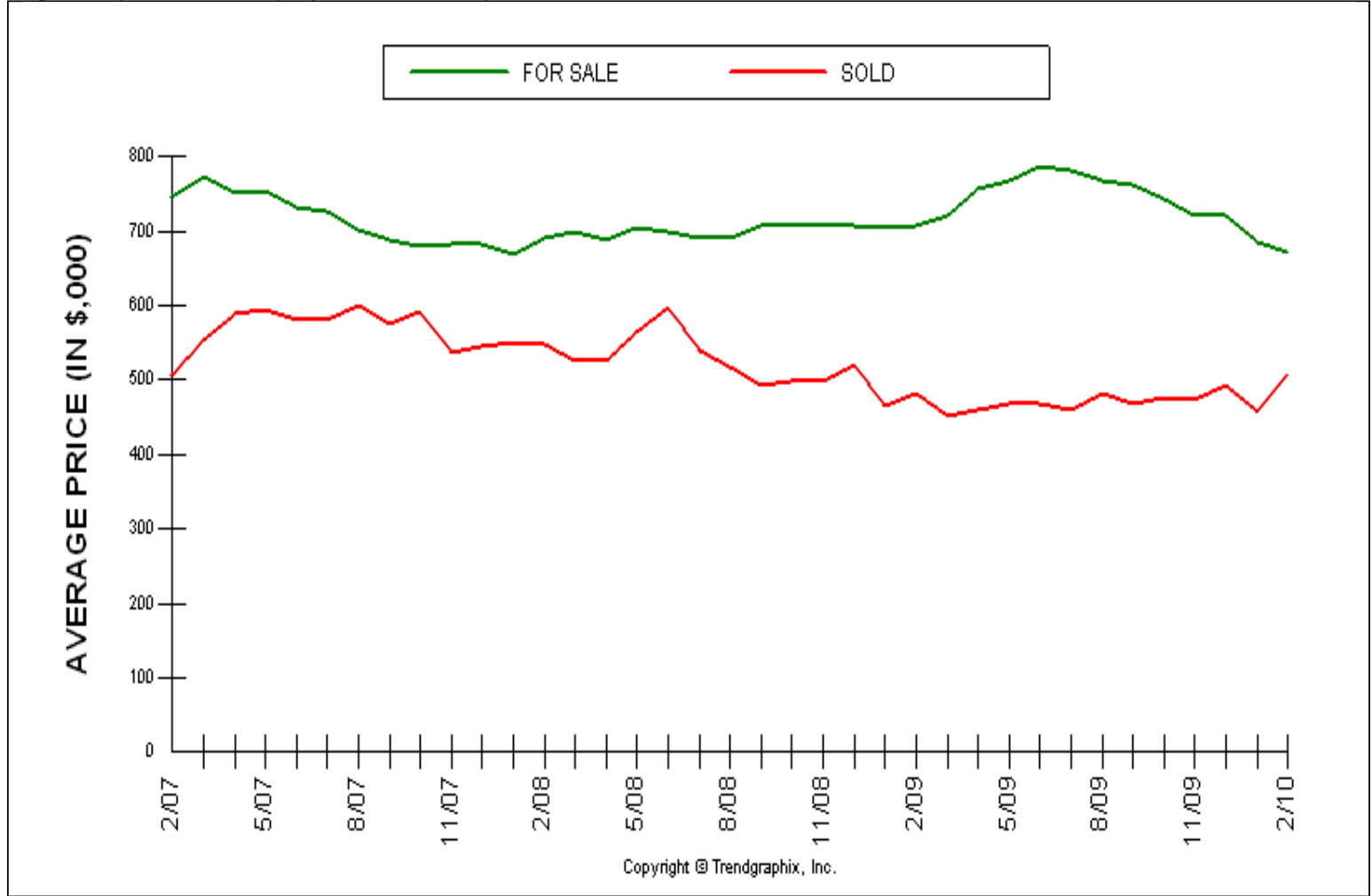
Published Mar. 2010**

Location : METRO (area 140,380,385,390,700,701,705,710,715,720)

Avg Price For Sale & Sold (Last 3 years)

Price Range: \$0 - No Limit, SQFT Range: 0 - No Limit

Single Family Homes - All Property Statuses - All Properties

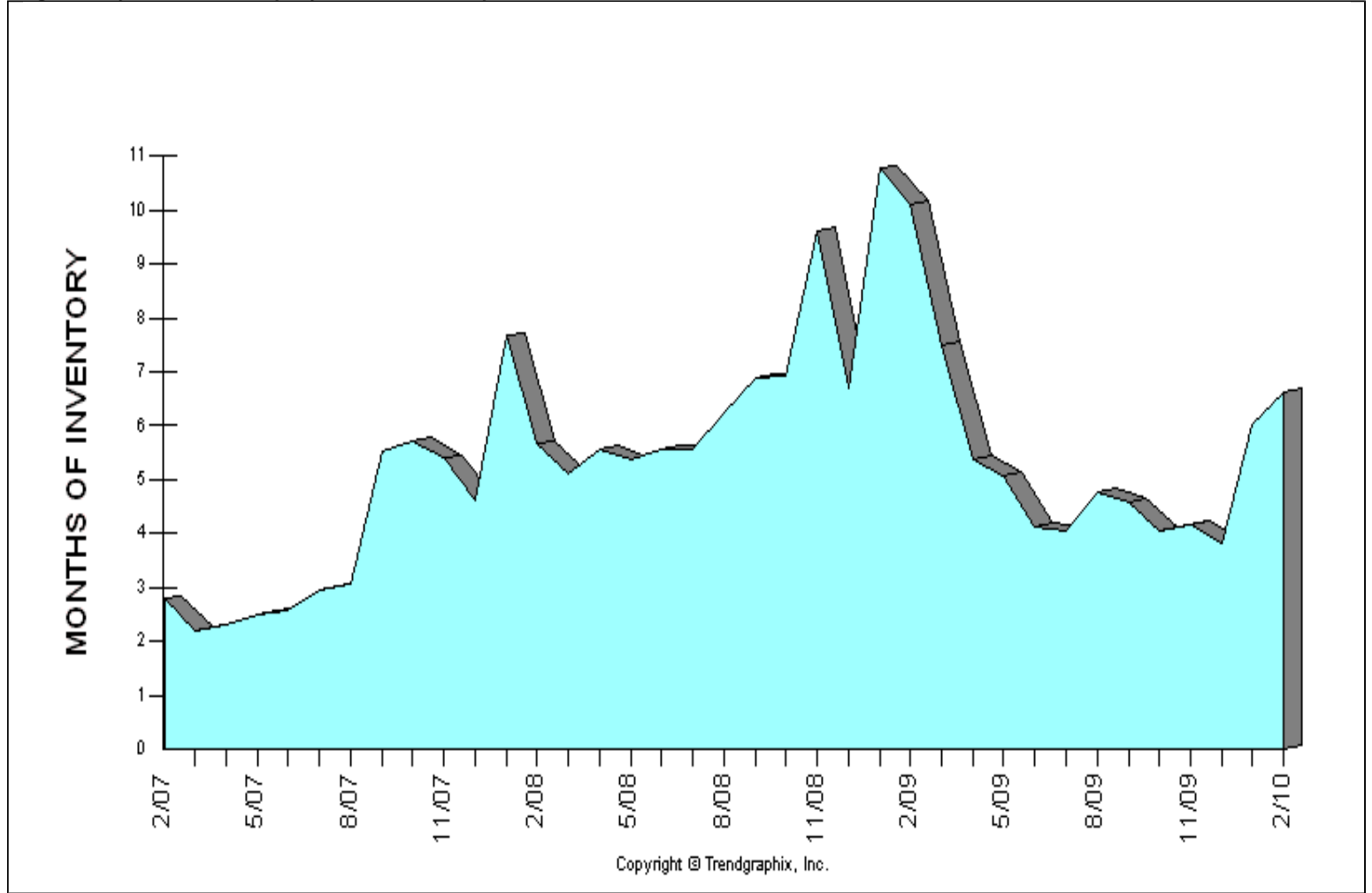


	1 month			1 year			3 years		
	Jan 10	Feb 10	% Change	Feb 09	Feb 10	% Change	Feb 07	Feb 10	% Change
Avg. Active Price	684	671	-1.9% ↓	706	671	-5% ↓	745	671	-9.9% ↓
Avg. Sold Price	457	506	10.7% ↑	483	506	4.8% ↑	506	506	0%

**All reports are published Mar. 2010, based on data available at the end of Feb. 2010. This representation is based in whole or in part on data supplied by the NWMLS. Neither the Board or its MLS guarantees or is in any way responsible for its accuracy. Data maintained by the Board or its MLS may not reflect all real estate activity in the market. Report reflects activity by all brokers participated in the MLS.

Published Mar. 2010**

Location : METRO (area 140,380,385,390,700,701,705,710,715,720)
Months of Inventory based on Closed Sales (Last 3 years)
Price Range: \$0 - No Limit, SQFT Range: 0 - No Limit
Single Family Homes - All Property Statuses - All Properties



	1 month			1 year			3 years		
	Jan 10	Feb 10	% Change	Feb 09	Feb 10	% Change	Feb 07	Feb 10	% Change
Months of Inventory (Closed Sales)	6	6.6	10% ↑	10.1	6.6	-34.7% ↓	2.8	6.6	135.7% ↑

**All reports are published Mar. 2010, based on data available at the end of Feb. 2010. This representation is based in whole or in part on data supplied by the NWMLS. Neither the Board or its MLS guarantees or is in any way responsible for its accuracy. Data maintained by the Board or its MLS may not reflect all real estate activity in the market. Report reflects activity by all brokers participated in the MLS.

Facts and Trends™



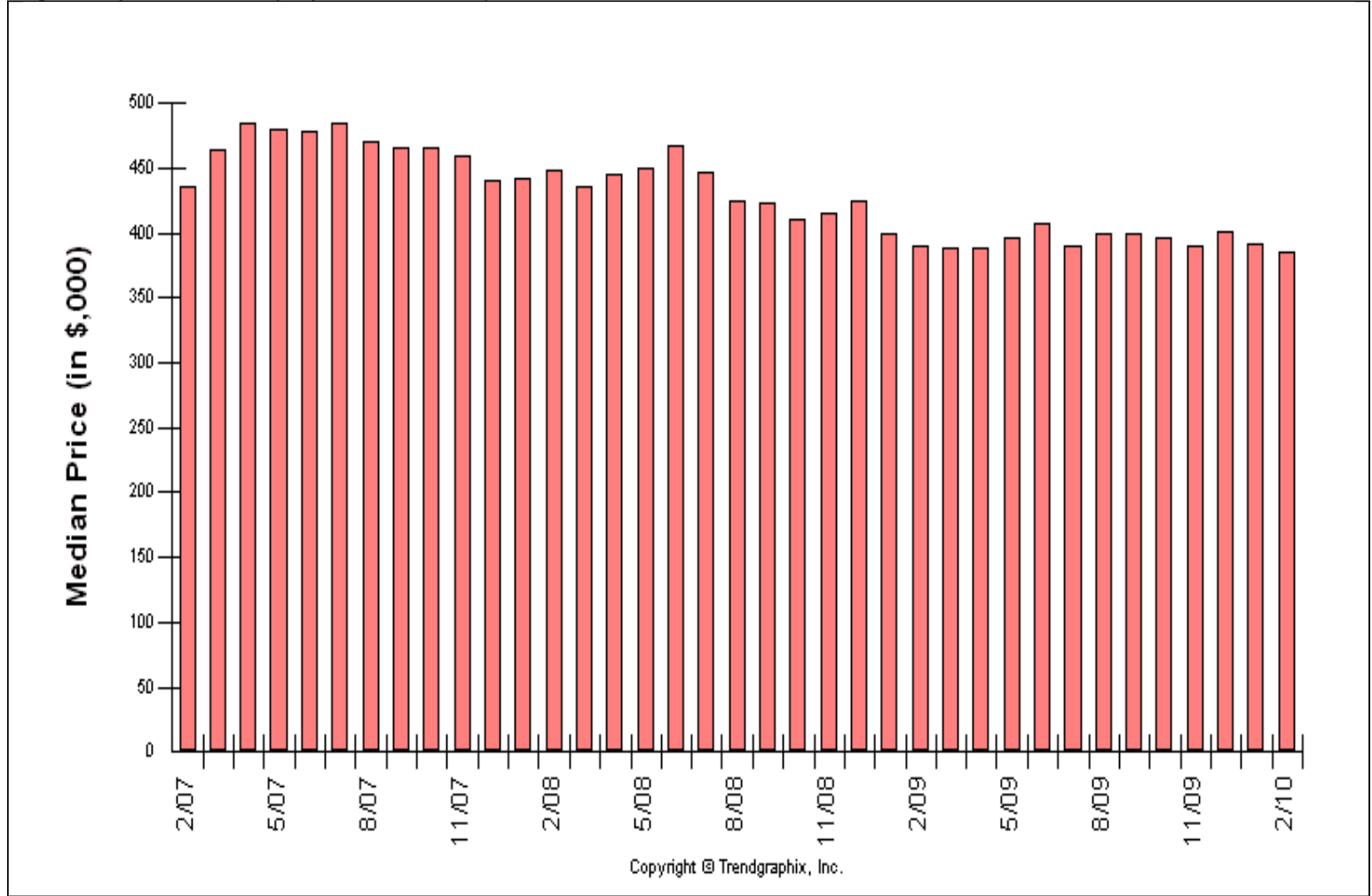
Published Mar. 2010**

Location : METRO (area 140,380,385,390,700,701,705,710,715,720)

Median Price Sold (Last 3 years)

Price Range: \$0 - No Limit, SQFT Range: 0 - No Limit

Single Family Homes - All Property Statuses - All Properties

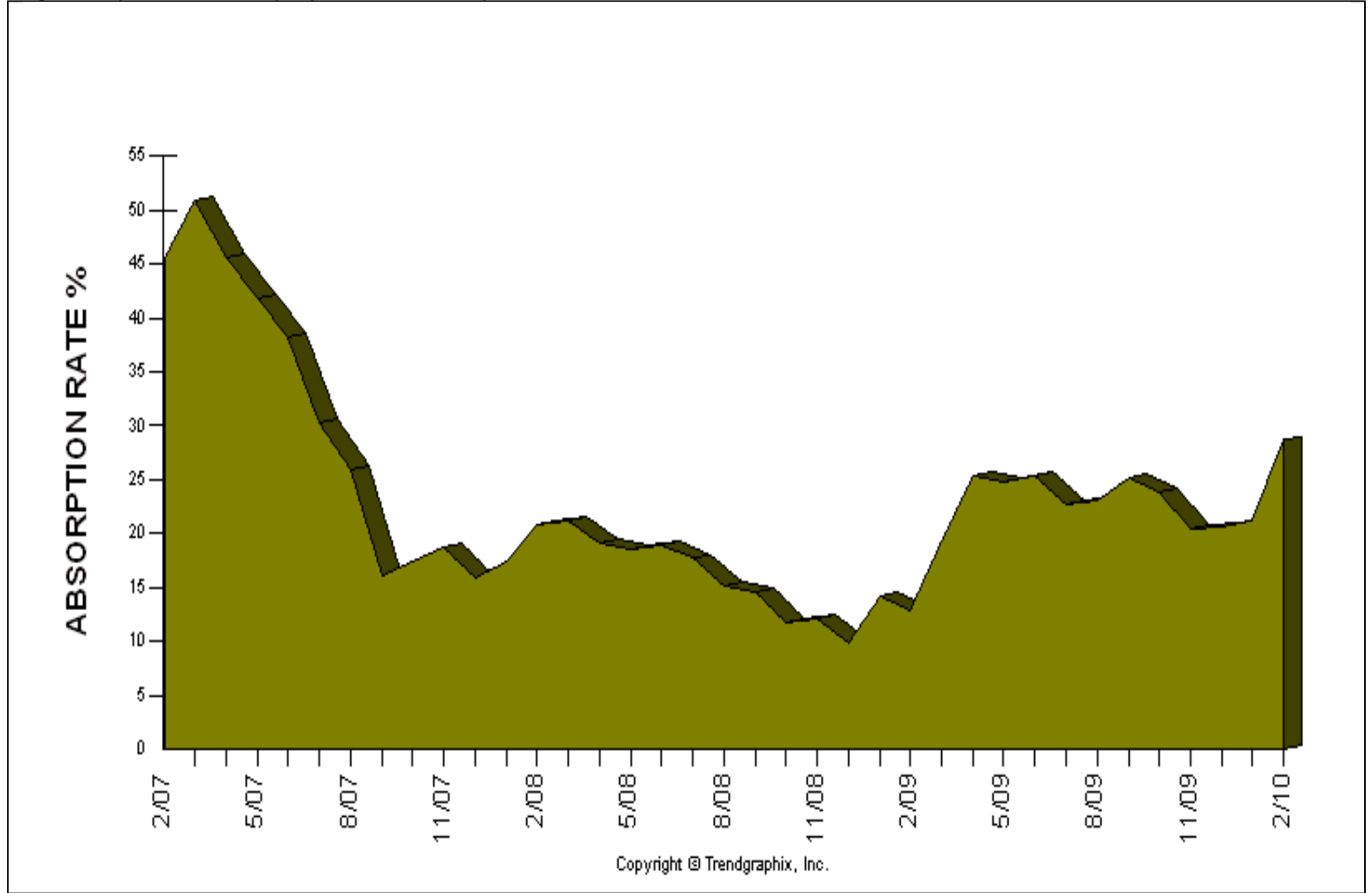


	1 month			1 year			3 years		
	Jan 10	Feb 10	% Change	Feb 09	Feb 10	% Change	Feb 07	Feb 10	% Change
Median Price	392	385	-1.8% ↓	390	385	-1.3% ↓	435	385	-11.5% ↓

**All reports are published Mar. 2010, based on data available at the end of Feb. 2010. This representation is based in whole or in part on data supplied by the NWMLS. Neither the Board or its MLS guarantees or is in any way responsible for its accuracy. Data maintained by the Board or its MLS may not reflect all real estate activity in the market. Report reflects activity by all brokers participated in the MLS.

Published Mar. 2010**

Location : METRO (area 140,380,385,390,700,701,705,710,715,720)
Absorption Rate based on Pended Sales (Last 3 years)
Price Range: \$0 - No Limit, SQFT Range: 0 - No Limit
Single Family Homes - All Property Statuses - All Properties



	1 month			1 year			3 years		
	Jan 10	Feb 10	% Change	Feb 09	Feb 10	% Change	Feb 07	Feb 10	% Change
Absorption Rate (Pended Sales)	21.2	28.7	35.4% ↑	13	28.7	120.8% ↑	45.6	28.7	-37.1% ↓

**All reports are published Mar. 2010, based on data available at the end of Feb. 2010. This representation is based in whole or in part on data supplied by the NWMLS. Neither the Board or its MLS guarantees or is in any way responsible for its accuracy. Data maintained by the Board or its MLS may not reflect all real estate activity in the market. Report reflects activity by all brokers participated in the MLS.